

全液壓汽車起重機

QY25K5

QY25K5 FULL HYDRAULIC TRUCK CRANE

最大起重能力  25t
Max. Total Rated Lifting Load

主臂最大起升高度  38.6m
Full-extend Boom Lifting Height

副臂最大起升高度  47.6m
Full-extend Boom+Jib Lifting Height



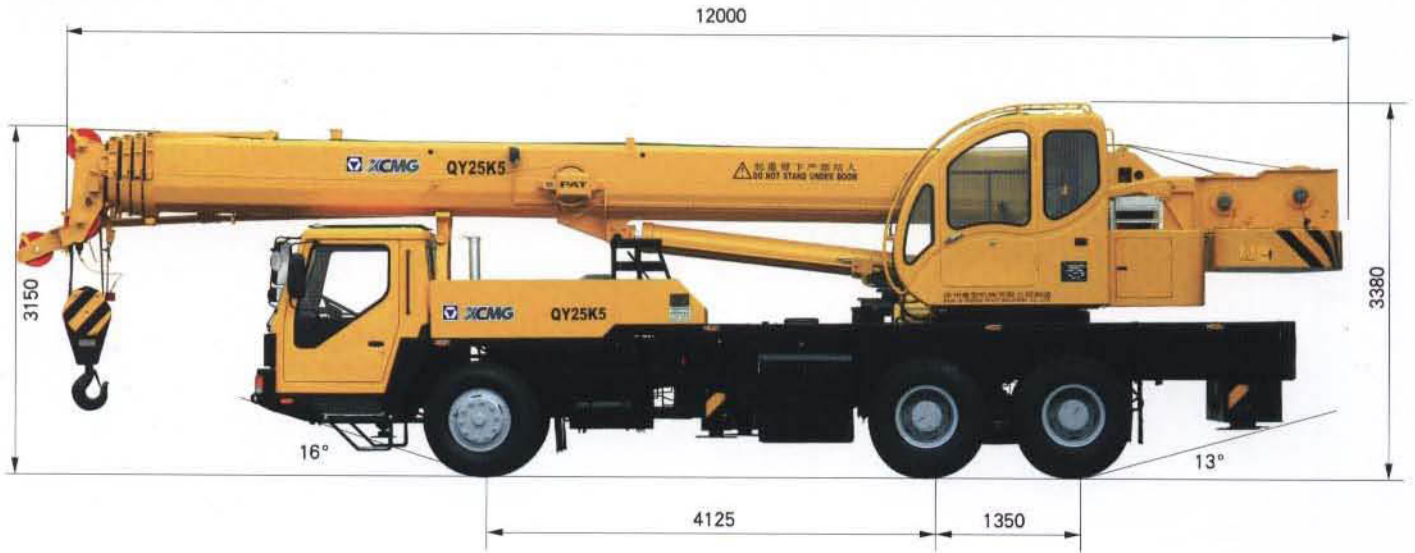
The Series of Construction Crane

□全路面起重機 ■汽車起重機 □履帶式起重機

□All-Terrain Crane Series ■Truck Crane Series □Crawler Crane Series

QY25K5 全液压汽车起重机

QY25K5 外形尺寸
Dimensions



尺寸参数 Dimensions

整机全长 Overall length	mm	12000
整机全宽 Overall width	mm	2500
整机全高 Overall height	mm	3380

重量参数 Weight

行驶状态整机重量 Dead weight in travel state	kg	31000
轴荷 Axle load		
前轴 Front Axle	kg	6400
后轴 Rear Axle	kg	24600

动力参数 Power

发动机型号 Engine model	SC8DK280Q3	WD615.329
发动机额定功率 Engine rated output	206/2200kW/(r/min)	213/2200kW/(r/min)
发动机额定扭矩 Engine rated torque	1112/1400N.m/(r/min)	1160/1400N.m/(r/min)
发动机额定转速 Max.travel speed	2200r/min	2200r/min

行驶参数 Travel

最高行驶速度 Max.Travel speed	km/h	75	75
最小转弯直径 Min.turning diameter	m	22	22
最小离地间隙 Min.ground clearance	mm	260	260
接近角 Approach angle	°	16	16
离去角 Departure angle	°	13	13
制动距离 (车速为30km/h) Braking distance(at 30km/h)	m	10	10
最大爬坡能力 Max.Gradeability	%	30	30
百公里油耗 Fuel consumption of 100km	L	~37	~37

主要性能参数 Lifting performance

最大额定总起重量 Max.Total rated lifting load	t	25
最小额定幅度 Min.rated working radius	m	3
转台尾部回转半径 Turning radius at swing table tail	mm	3065
最大起重力矩 Max.load moment		
基本臂 Base boom	kN.m	961
最长主臂 Full-extend boom	kN.m	450
最长主臂 + 副臂 Full-extend boom+Jib	kN.m	436
支腿距离 Outrigger extension distance		
纵向 / 横向 Longitudinal/Lateral	m	4.8/6.0
起升高度 Lifting height		
基本臂 Base boom	m	10.2
最长主臂 Full-extend boom	m	38.6
最长主臂 + 副臂 Full-extend boom+Jib	m	47.6

工作速度参数 Working speed

起重臂全程起臂 Boom Raising	s	75
起重臂伸缩时间 Boom telescoping time		
全程全伸 Full - extending	s	150
最大回转速度 Max.Slewing speed	r/min	2.5
支腿伸缩时间 Outrigger telescoping time		
水平支腿同时伸 / 缩 Outrigger beam extending/retracting synchronously	s	35/30
垂直支腿同时伸 / 缩 Outrigger jack extending/retracting synchronously	s	40/35
起升速度 (单绳) Hoisting speed(single rope)		
主起升机构满载 / 空载 Main winch with full load/no load	m/min	75/125
副起升机构满载 / 空载 Auxiliary winch with full load/no load	m/min	75/125

QY25K5 FULL HYDRAULIC TRUCK CRANE

QY25K5 主臂起重性能表 Total rated lifting load for boom (表一 Table 1)

全伸水平支腿；不支第五支腿，侧方、后方作业；全伸水平支腿；支好第五支腿，360° 全回转作业
Full-extend outrigger, without the 5th outrigger, boom at the side or the rear, or with the 5th outrigger, 360° swing

工作幅度 radius m	基本臂 Base boom 10.1m		中长臂 Mid-extend boom 13.65m		中长臂 Mid-extend boom 17.2m		中长臂 Mid-extend boom 22.52m		中长臂 Mid-extend boom 27.85m		中长臂 Mid-extend boom 33.18m		全伸臂 Full-extend boom 38.5m	
	起重量 Lifting Load (kg)	起升高度 Lifting Height (m)	起重量 Lifting Load (kg)	起升高度 Lifting Height (m)	起重量 Lifting Load (kg)	起升高度 Lifting Height (m)	起重量 Lifting Load (kg)	起升高度 Lifting Height (m)	起重量 Lifting Load (kg)	起升高度 Lifting Height (m)	起重量 Lifting Load (kg)	起升高度 Lifting Height (m)	起重量 Lifting Load (kg)	起升高度 Lifting Height (m)
3.0	25000	10.2	22000	14.0										
3.5	25000	9.9	21500	13.8										
4.0	24200	9.6	20000	13.6	17000	17.4								
4.5	21800	9.3	18000	13.4	16000	17.2	12000	22.8						
5.0	19100	8.9	16500	13.1	15000	17.0	11400	22.7	9500	28.2				
5.5	17300	8.4	15000	12.8	14000	16.8	10800	22.5	8800	28.0				
6.0	15800	7.9	13500	12.5	13000	16.6	10400	22.3	8400	27.9	6800	33.4		
6.5	13800	7.4	12200	12.2	12200	16.3	9900	22.2	8000	27.8	6200	33.3		
7.0	12200	6.7	11200	11.8	11500	16.1	9400	22.0	7600	27.6	6000	33.2	5000	38.6
8.0	10500	4.8	10500	11.0	10200	15.5	8500	21.5	7300	27.3	5600	32.9	4600	38.4
9.0			8600	9.9	8430	14.8	7800	21.0	6600	26.9	5300	32.6	4300	38.1
10.0			7000	8.6	6930	14.0	7100	20.5	6100	26.5	4900	32.2	4000	37.8
11.0			5900	6.8	5760	13.0	6370	19.9	5600	26.0	4600	31.8	3800	37.5
12.0					4830	11.9	5420	19.2	5200	25.5	4300	31.4	3500	37.1
13.0					4070	10.5	4660	18.4	4700	24.9	4000	31.0	3370	36.8
14.0					3440	8.7	4020	17.5	4260	24.3	3700	30.4	3160	36.3
15.0					2800	6.3	3480	16.5	3720	23.6	3400	29.9	2960	35.9
16.0							3020	15.4	3260	22.8	3100	29.3	2850	35.4
18.0							2260	12.5	2500	21.0	2720	28.0	2550	34.3
20.0							1680	8.1	2010	18.9	2130	26.4	2160	33.1
22.0									1540	16.2	1660	24.6	1820	31.6
24.0									1160	12.5	1380	22.4	1450	30.0
26.0											1060	19.8	1140	28.1
28.0											780	16.5	880	25.9
30.0											550	11.8	660	23.3
32.0													480	20.2
34.0													320	16.2
倍率 Parts of line	10		10		6		5		4		3		3	
主臂最小仰角 Min. boom angle	24		26.6		19		19.3		25.1		19.6		23.8	
主臂最大仰角 Max. boom angle	66.6		73		73.1		75.9		77.6		77.9		78	

注：

对表一、表二中起重量的说明

◆ 表中额定总起重重量，是在平整的坚固地面上本起重机能够保证的最大起重重量；

◆ 表中额定总起重重量包括吊钩和吊具的重量；

◆ 表中的工作幅度为起吊重物离地时的幅度，是包括吊臂变形量在内的实际值。因而起吊前应考虑吊臂变形量；

◆ 只允许在7级风以下进行作业；

◆ 表中的起升高度为参考值，作业时应以力限位器显示为准；

◆ 360° 全回转前必须支好第五支腿，否则不允许在前方作业；

◆ 臂端滑轮的性能与主臂性能相同，但最大起重重量不得超过2800kg；

◆ 当吊臂长度和工作幅度与表中不相同，应取下一个吊臂长度和工作幅度进行作业；

◆ 当副臂处于作业状态而使用主臂吊重时，主臂额定起重重量至少应减少400kg；

◆ 作业前，必须全伸二节臂后再伸三、四、五节臂，全缩三、四、五节臂后再缩二节臂；

◆ 主、副卷扬的最大单绳拉力为28000N，主卷扬钢丝绳长度为165m，副卷扬为105m；

◆ 最大支腿反力为：300000N。

Notes to the Table 1 and Table 2:

◆ The data given in the tables are the maximum lifting capacity when the crane is set up on level and firm ground.

◆ The total rated lifting loads include the weight of hook block and slings.

◆ The working radii in the tables are the actual values including the deflection of boom under load.

◆ The lifting operation is only permissible under the condition of wind force 7.

◆ The lifting height in the tables is for reference, and carry out lifting operation according to the load moment limiter.

◆ Extend the 5th outrigger before 360° full swing, otherwise load lifting over front is not permissible.

◆ The total rated lifting loads for single top (auxiliary boom sheave) are the same as those for main boom, but the max. lifting load must not exceed 2800kg.

◆ When the boom length and the working radius in the tables are different, take the next boom length and working radius.

◆ When using boom for lifting but with jib attached, the total rated load for boom should be deducted at least 400kg.

◆ Before lifting, first extend fully the 2nd boom section, then the 3rd, 4th and 5th boom sections. After lifting, first retract the 3rd, 4th and 5th boom sections, then the 2nd boom section.

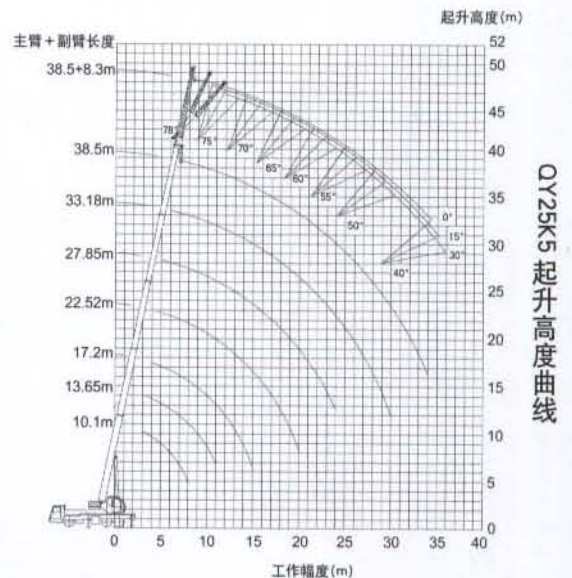
◆ The max. single line pull for main and auxiliary winches is 28000N. The main winch rope length is 165m and the auxiliary winch rope length is 105m.

◆ The max. supporting force for outrigger is 300000N.

副臂起重性能表 Total rated lifting load for jib (表二 Table 2)

全伸水平支腿；不支第五支腿，侧方、后方作业；全伸水平支腿；支好第五支腿，360° 全回转作业
Full-extend outrigger, without the 5th outrigger, boom at the side or the rear, or with the 5th outrigger, 360° swing

主臂仰角 Boom angle (°)	主臂长度 Boom 38.5m, 副臂长度 Jib 8.3m											
	0°			15°			30°					
	起重量 Lifting Load (kg)	工作幅度 Working Radius (m)	起升高度 Lifting height (m)	起重量 Lifting Load (kg)	工作幅度 Working Radius (m)	起升高度 Lifting height (m)	起重量 Lifting Load (kg)	工作幅度 Working Radius (m)	起升高度 Lifting height (m)			
78	2800	10.7	47.6	2500	12.1	47.2	1900	13.4	46.1			
75	2800	13.1	47.3	2400	14.4	46.4	1750	15.6	45.2			
72	2750	15.3	46.4	2200	16.7	45.5	1700	17.8	44.2			
70	2650	16.8	45.8	2100	18.2	44.8	1600	19.3	43.5			
65	2150	20.4	44.1	1800	21.7	42.9	1500	22.7	41.5			
60	1800	23.9	42.1	1600	25.1	40.8	1400	26.1	39.2			
55	1200	27.2	39.7	1140	28.3	38.3	1050	29.1	36.6			
50	800	30.2	37.1	750	31.3	35.6	700	31.9	33.8			
40	280	35.6	31.1	260	36.4	29.4	250	36.8	27.6			
吊钩重量 hook block weight				55kg								



注：公司保留随技术改进而修改技术参数及部件的权利
All specifications are subject to technical modifications without notice