

# QY25K FULL HYDRAULIC TRUCK CRANE

## QY25K全液压汽车起重机主要特点

- ◆ QY25K汽车起重机外观和液压系统获得6项国家专利。
- ◆ 具有4节大圆弧八边形主臂，单缸前支式变幅机构整车重心低，稳定性好。
- ◆ 主副卷扬相互独立，既可单独工作也可同时工作。
- ◆ 全头驾驶室，视野更开阔，操作更舒适。
- ◆ 回转机构具有自由滑转功能，能自动找正重物，小齿轮偏心，啮合间隙易调整。
- ◆ 新材料的使用使整车重量大幅度下降，整车性能显著提高，主要性能居行业领先。
- ◆ 先导式液压操纵系统，推动装在座椅上的两个手柄就能精确完成所有作业。(可应用户要求选装机械操纵系统)
- ◆ 液压阀组采用集成化模块设计，压力损失小、效率高。
- ◆ 国际技术设计的平衡阀，液压回路中过滤器、防气蚀及油堵装置，使作业更可靠。
- ◆ 安全保护齐全完善，配有全自动力 limiter、高度限位器、钢丝绳过放装置，使作业更安全。
- ◆ 发动机、上下车空调、液压装置可选装。

## QY25K FULL HYDRAULIC TRUCK CRANE

- ◆ QY25K Truck Crane profile and hydraulic system won 6 China state patents.
- ◆ 4-section boom of all-round octagonal cross-section, Single cylinder for front support elevating low center of gravity, good stability.
- ◆ Main winch and auxiliary winch separated from each other can work not only individually but also simultaneously.
- ◆ Full-dimension driver's cab with wide vision is convenient for operation.
- ◆ Swing system with free-sliding function can automatically align to load. Pinion offset makes meshing clearance easy to adjust.
- ◆ New materials are used to minimize the total weight and maximize the whole vehicle performances. Main performances are in the leading position in the industry.
- ◆ Hydraulic pilot control system can finish all operations precisely with gently pushing the two joysticks on armrest. (Mechanical operation system is option for customer)
- ◆ Hydraulic valve block is integrated modular designed, little pressure loss and high efficiency.
- ◆ Balance valve designed with international technology, oil filter, anti-cavitation device and plug in hydraulic circuit make operation more reliable.
- ◆ Well-equipped safety devices, such as automatic moment limiter, hoist height limiter, wire rope over-release cut-out device, make operation more safe.
- ◆ Engine, air conditioners for superstructure and chassis and hydraulic device are available for option.



Nanjing Construction Machinery Co., Ltd.

Address: 1708 Room 6# Building 399 Zhongyang Road,  
Gulou District 210037, Nanjing, Jiangsu, China.

Tel: 0086-25-83179767/83179757

Fax: 0086-25-83179787

E-mail: sales@truckcrane.com.cn san.sen@truckcrane.com.cn

Service after-sold:

Tel: 0086-25-83179717

E-mail: Service@truckcrane.com.cn

Http://www.truckcrane.com.cn



3C强制性产品认证证书 职业安全健康管理体系认证证书 环境管理体系认证证书




国家一级企业证书 ISO9001质量管理体系认证证书 ISO14001环境管理体系认证证书

2008年1月版

徐工集团 · 臂架机械

# QY25K

SYSTEMIC OPTIMIZATION & UPGRADE

最大起重能力  
Max. Total Rated Lifting Load  25t

主臂最大起升高度  
Full-extend Boom Lifting Height  32.5m

副臂最大起升高度  
Full-extend Boom+Jib Lifting Height  40.8m



### The Series of Construction Crane

全地面起重机  汽车起重机  履带式起重机

All-Terrain Crane Series  Truck Crane Series  Crawler Crane Series

# QY25K 全液压汽车起重机

# FULL HYDRAULIC TRUCK CRANE

## 外形尺寸 Dimensions



## 重量参数 Weight

行驶状态整机质量 Dead weight in travel state	27900/29400kg
轴荷 Axle load	
前轴 Front axle	6100/6200kg
后轴 Rear axle	21800/23200kg

## 尺寸参数 Dimensions

整机全长 Overall length	12360mm
整机全宽 Overall width	2500mm
整机全高 Overall height	3380mm

## 主要性能参数 Lifting performance

最大额定总起重量 Max.total rated lifting load	25t
最小额定幅度 Min.rated working radius	3m
转台尾部回转半径 Turning radius at swing table tail	3065mm
最大起重力矩 Max.load moment	
基本臂 Base boom	948kN.m
最长主臂 Full-extend boom	439kN.m
最长主臂+副臂 Full-extend boom+Jib	331kN.m
支腿距离 Outrigger extension distance	
纵向/横向 Longitudinal/Lateral	4.8(5.14)/6.0m
起升高度 Lifting height	
基本臂 Base boom	10.5m
最长主臂 Full-extend boom	32.5m
最长主臂+副臂 Full-extend boom+Jib	40.8m

## 工作速度参数 Working speed

起臂全程起臂 Boom raising	75s
起重臂伸缩时间 Boom telescoping time	
全程全伸/缩 Full - extending / retracting	100/60s
最大回转速度 Max.slewing speed	2.5r/min
支腿伸缩时间 Outrigger telescoping time	
水平支腿同时伸/缩 Outrigger beam extending/retracting synchronously	35/30s
垂直支腿同时伸/缩 Outrigger jack extending/retracting synchronously	40/35s
起升速度(单绳) Hoisting speed(single rope)	
主起升机构满载/空载 Main winch with full load/no load	85/120m/min
副起升机构满载/空载 Auxiliary winch with full load/no load	85/120m/min

## 动力参数 Power

发动机型号 Engine model	SC8DK280Q3	WD615.329
发动机额定功率 Engine rated output	206/2200kW/(r/min)	213/2200kW/(r/min)
发动机额定扭矩 Engine rated torque	1112/1400N.m/(r/min)	1160/1400N.m/(r/min)
发动机额定转速 Max.travel speed	2200r/min	2200r/min

## 行驶参数 Travel

发动机型号 Engine model	SC8DK280Q3	WD615.329
最高行驶速度 Max.travel speed	75m/h	75m/h
最小转弯直径 Min.turning diameter	22000mm	22000mm
最小离地间隙 Min.ground clearance	260mm	260mm
接近角 Approach angle	16°	16°
离去角 Departure angle	13°	13°
制动距离(车速为30km/h) Braking distance(at 30km/h)	10m	10m
最大爬坡能力 Max.gradeability	30%	30%
百公里油耗 Fuel consumption of 100km	-37L	-37L

## 主臂起重性能表 Total rated lifting load for boom (表一 Table 1)

工作幅度 Working radius m	基本臂 Base boom 10.40m		中长臂 Mid-extend boom 17.6m		中长臂 Mid-extend boom 24.80m		全伸臂 Full-extend boom 32.00m	
	起重量 Lifting Load (kg)	起升高度 Lifting Height (m)	起重量 Lifting Load (kg)	起升高度 Lifting Height (m)	起重量 Lifting Load (kg)	起升高度 Lifting Height (m)	起重量 Lifting Load (kg)	起升高度 Lifting Height (m)
3.0	25000	10.50	14700	18.12				
3.5	25000	10.25	14700	18.00				
4.0	24000	9.97	14700	17.83	9100	25.28		
4.5	21500	9.64	14700	17.66	9100	25.16		
5.0	18700	9.28	14200	17.47	9100	25.03		
5.5	17200	8.86	13500	17.27	9100	24.89	6500	32.32
6.0	15700	8.39	13000	17.05	8800	24.74	6500	32.20
7.0	12100	7.22	12000	16.54	8200	24.41	6500	31.95
8.0	9600	5.54	9900	15.95	7500	24.02	6100	31.66
9.0			8100	15.27	7100	23.59	5500	31.33
10.0			6800	14.48	6400	23.10	5000	30.97
12.0			5000	12.49	5060	21.94	4300	30.13
14.0			3800	9.60	3900	20.51	3800	29.12
16.0					3100	18.74	3100	27.93
18.0					2530	16.52	2500	26.52
20.0					2000	13.61	1960	24.95
22.0					1650	9.29	1600	22.90
24.0							1290	20.54
26.0							1020	17.60
28.0							810	13.71
29.0							700	11.07
倍率 Parts of the	10		6		4		3	
吊钩重量 Weight of hook block	250kg							
最小主臂仰角 Min boom angle	28°		30°		20°		19°	
最大主臂仰角 Max boom angle	68°		76°		78°		78°	

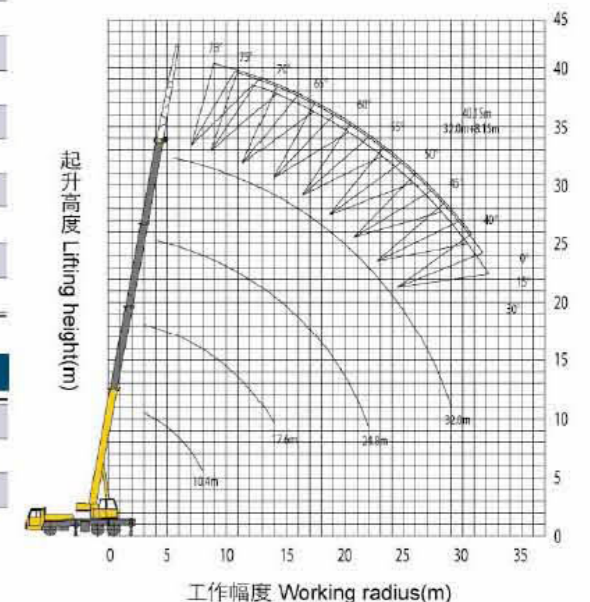
## 副臂起重性能表 Total rated lifting load for jib (表二 Table 2)

主臂仰角 Boom angle	主臂 Boom 32m + 副臂 Jib 8.15m, 侧后方 At the side or the rear					
	补偿角 Offset angle					
	0°		15°		30°	
	幅度 Working Radius (mm)	起重量 Lifting Load (kg)	幅度 Working Radius (mm)	起重量 Lifting Load (kg)	幅度 Working Radius (mm)	起重量 Lifting Load (kg)
78°	9000	2800	11000	2500	13000	1900
75°	11000	2800	13000	2400	14700	1750
72°	13000	2750	15000	2200	16600	1700
70°	14200	2650	16200	2100	17800	1600
65°	17500	2150	19400	1800	20800	1500
60°	20500	1800	22400	1600	23800	1400
55°	23200	1400	25300	1300	26500	1230
50°	26500	1000	28000	900	29000	900
40°	31500	500	32500	400	33300	400

吊钩重量 Weight of hook block 55kg

注：  
对表一、表二中起重量的说明：  
◆ 表中额定起重量所表示的数值，是在平整的坚固地面上本起重机能够保证的最大起重量。  
◆ 表中额定起重量包括吊钩和吊具的重量。  
◆ 表中的工作幅度是包括吊臂的变形量在内的实际值，因此一定以工作幅度为依据进行起重作业。  
◆ 风压为125N/m<sup>2</sup>允许达7级风时起重机仍可作业。  
◆ 表一起升高度及表二的幅度均为参考值。

Notes: about table 1 and table 2:  
◆ The data in the table are the max. lifting capacity when the crane is set up on level and firm ground.  
◆ The total rated lifting load in the table includes the weight of hook block and slings.  
◆ The working radius in the table is the actual value including boom deflection under loads.  
◆ Wind pressure 125N/m<sup>2</sup>, Lifting operation is also allowed under the condition of wind force scale 7.  
◆ Lifting height in table 1 and working radius in table 2 are reference value.



▲ 起升高度曲线 Lifting height area

注：公司保留随技术改进而修改技术参数及部件的权利  
All specifications are subject to technical modifications without notice