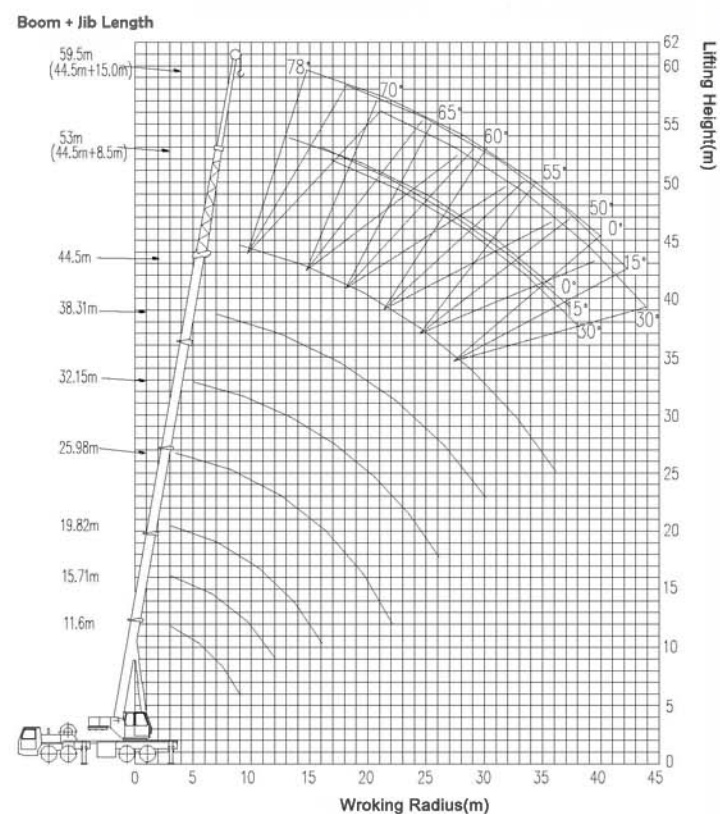


www.truckcrane.com.cn

# QY70K-I汽车起重机

QY70K-I TRUCK CRANE



本印刷品所包含的图片及数据，会随着产品的不断升级而改变，请以实际产品为准。  
Pictures and data in this catalog change with the upgrade and modification of products, so please according to real vehicle.

**Nanjing Construction Machinery Co.,Ltd.**

Address:1708 Room 6# Building 399 Zhongyang Road Gulou District 210037,Nanjing, Jiangsu Province of China.

Tel:0086-25-83179757, 83179767, 83179167

Fax:0086-25-83179787

E-mail:sales@truckcrane.com.cn san.sen@truckcrane.com.cn

Service after-sold :

Tel:0086-25-83179717

E-mai:Service@truckcrane.com.cn

Http://www.truckcrane.com.cn



# QY70K-I 汽车起重机 70K-I TRUCK CRANE



QY70K-I  
升级版



**QY70K-I**  
宽头驾驶室  
Full Drivers Cab

五节臂U形截面主臂  
Single cylinder elevation, double winches  
上车先导比例控制  
Crane pilot proportional control



**QY70K-I**  
宽头驾驶室  
Full Drivers Cab

五节臂U形截面主臂  
Single cylinder elevation, double winches  
上车先导比例控制  
Crane pilot proportional control



创新吊臂系统，采用嵌入式滑块。插入式臂头专利技术与国际先进的“U”形截面吊臂，吊重性能卓越，吊重工作安全可靠。  
Innovated boom system with inserted sliders, plug-in boom head of patented technology and world advanced shaped boom cross section makes excellent lifting capacity, safe and reliable lifting operations.



专有伸缩技术，避免由误操作引起的芯管弯曲、油缸弯曲、臂架折断情况的出现，提高操作安全性。  
Exclusive telescoping technology prevents occurrence of core pipe bending, oil cylinder bending and boom breaking caused by mis-operation, and therefore operation safety is improved.



力矩限制器采用彩色液晶显示器，实现故障诊断智能化，精度领先于同行业。  
Load moment limiter with color LCD realizes intelligent trouble diagnostic, and its precision leads in the same-class products in the industry.



人性化设计的驾驶室与操纵室，空间更大，操作灵活简便。  
Ergonomic design cabs for driver and operator are spacious enough for flexible and convenient operations.



六大专有工艺制造技术，确保高品质产出。  
Six specialized processing techniques ensure high quality production.



工况拓展两倍，新增5吨配重。  
Working area is extended two times by 5t counterweight newly added.

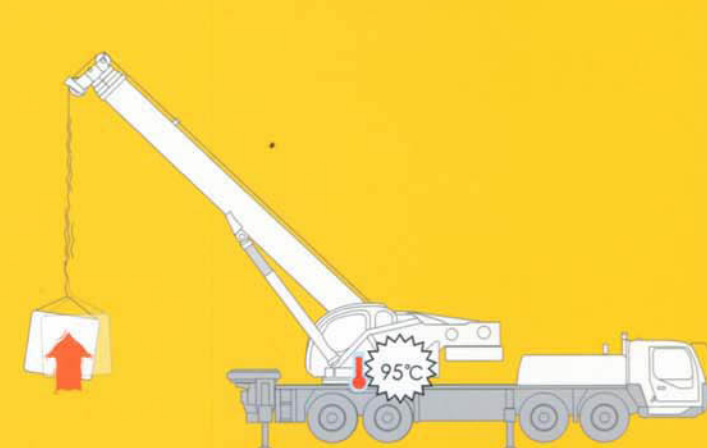
负载敏感系统示意图 Loading sensitive system diagram

八项专利技术，保证起升、回转、变幅机构动作的平顺性、高效性与节能性。  
Eight patented technologies ensure the smooth movement, high efficiency & economy of lifting, slewing and elevating mechanisms.

正常液压油温度，保证系统良好的运转，并延长产品生命周期。  
Normal hydraulic oil temperature, stable operation, long service life

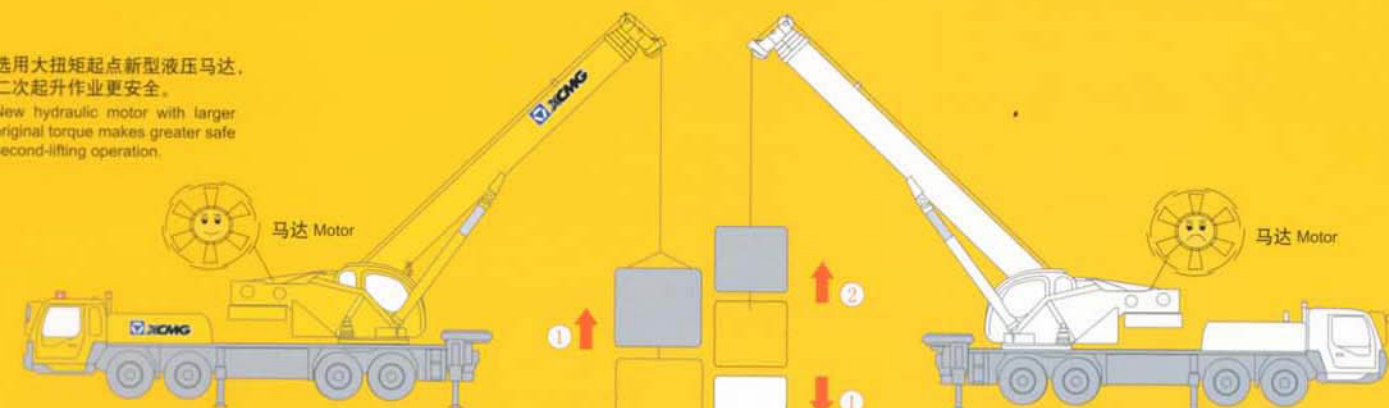


传统操纵系统示意图 Traditional operating system diagram



大排量马达保证一次性实现二次提升  
Large displacement motor ensures to realize second lifting for one time

选用大扭矩起点新型液压马达，二次起升作业更安全。  
New hydraulic motor with larger original torque makes greater safe second-lifting operation.



小排量马达容易产生二次起升下滑  
Small displacement motor may result in sliding down in second lifting, existing hidden troubles

尺寸参数 Dimensions		Unit	
整体全长 Overall length		mm	13930
整机全宽 Overall width		mm	2800
整机全高 Overall height		mm	3575
重量参数 Weight			
行驶状态整机质量 Dead weight in travel state		kg	43000(不含1t副配重)
前轴轴荷 Front axle load		kg	17000
后轴轴荷 Rear axle load		kg	26000
动力参数 Power			
发动机型号 Engine model			WD615.338(国III)
发动机额定功率 Engine rated output		kW/(r/min)	276/2200
发动机额定扭矩 Engine rated torque		N.m/(r/min)	1500/1400
行驶参数 Travel			
最高行驶速度 Max.travel speed		km/h	80
最小转弯直径 Min.turning diameter		m	24
最小离地间隙 Min.ground clearance		mm	327
接近角 Approach angle		°	19
离去角 Departure angle		°	13
最大爬坡能力 Max.gradeability		%	40
百公里油耗 Fuel consumption of per 100km		L	45
主要性能参数 Lifting performance			
最大额定总起重量 Max.total rated lifting load		t	70
最小额定幅度 Min.rated working radius		m	3
转台尾部回转半径 Turning radius at swing table tail		m	3.55
最大起重力矩 Max.load moment		kN.m	2303
基本臂 Base boom		m	11.6
最长主臂 Fully-extended boom		m	44.5
最长主臂+副臂 Full-extended boom+Jib		m	59.5
支腿纵向距离 Outrigger longitudinal distance span		m	6.1
支腿横向距离 Outrigger lateral distance span		m	7.3
工作速度参数 Working speed			
起重臂变幅时间 Boom elevating time		s	60
起重臂全伸时间 Boom telescoping time		s	≤150
最大回转速度 Max.slewing speed		r/min	≥2.0
主起升机构最大速度(单绳)(空载) Winch mechanism speed(single rope)(NO load)		m/min	≥130
副起升机构最大速度(单绳)(空载) Auxiliary mechanism speed(single rope)(NO load)		m/min	≥108

**QY70K-I主臂起重性能表 Total rated lifting load for boom (支腿半伸5m, 配重5t)**

支腿半伸5m, 不支第五支腿, 吊臂位于起重机侧方或后方;  
支第五支腿, 360°全回转  
Half-extend outrigger, without the 5th outrigger, boom at the side or the rear,  
or with the 5th outrigger, 360°swing

工作幅度 Working Radius (m)	基本臂 Base boom	中长臂 Mid-extend boom	中长臂 Mid-extend boom	中长臂 Mid-extend boom	中长臂 Mid-extend boom	中长臂 Mid-extend boom	全伸臂 Full-extend boom
3.0	70000						
3.5	63500						
4.0	54500	47500	40600				
5.0	33600	33400	33400	27600			
6.0	22600	22400	22300	23800			
7.0	16500	16300	16200	17500	18200		
8.0	12600	12400	12300	13500	14300	14100	
9.0	9800	9700	9600	10700	11400	11900	
10.0		7700	7600	8700	9400	9800	9900
12.0		5000	4900	5900	6500	7000	7300
14.0			3100	4100	4700	5100	5400
16.0			1900	2800	3400	3800	4100
18.0				1900	2400	2800	3100
20.0				1100	1700	2100	2300
22.0				500	1100	1500	1700
24.0					600	1000	1200
26.0						600	800
28.0							500
倍率 Parts of line	12	9	8	6	4	3	3
主臂仰角 Boom angle	29.8°~71.5°	34.5°~73.1°	31.4°~77.2°	38.1°~79.4°	48.0°~79.6°	52.9°~80.0°	56.4°~79.5°

**QY70K-I主臂起重性能表 Total rated lifting load for boom (支腿全伸7.3m, 配重4t)**

支腿全伸, 不支第五支腿, 吊臂位于起重机侧方或后方;  
支第五支腿, 360°全回转  
Full-extend outrigger, without the 5th outrigger, boom at the side or the rear,  
or with the 5th outrigger, 360°swing

工作幅度 Working Radius (m)	基本臂 Base boom	中长臂 Mid-extend boom	中长臂 Mid-extend boom	中长臂 Mid-extend boom	中长臂 Mid-extend boom	中长臂 Mid-extend boom	全伸臂 Full-extend boom
3.0	70000						
3.5	63500						
4.0	54500	47500	40600				
5.0	47000	42600	38500	27600			
6.0	38500	37000	34200	25500			
7.0	29500	28800	28500	23500	18200		
8.0	22500	22300	22300	21500	17500	14100	
9.0	17800	17700	17600	18700	16000	14100	
10.0		14400	14300	15500	14500	13200	9900
12.0		9700	9600	10800	11500	11200	9100
14.0			6800	7800	8500	9000	8100
16.0			4800	5800	6500	6900	7200
18.0				4400	5000	5400	5700
20.0				3300	3900	4300	4600
22.0				2400	3000	3400	3700
24.0				2300	2700	3000	
26.0				1700	2100	2400	
28.0					1600	1900	
30.0					1200	1500	
32.0					900	1200	
34.0						800	
36.0						600	
倍率 Parts of line	12	9	8	6	4	3	3
主臂仰角 Boom angle	29.8°~71.5°	34.5°~73.1°	31.4°~77.2°	29.2°~79.4°	36.2°~79.6°	39.4°~80.0°	37.2°~79.5°

**QY70K-I副臂起重性能表 Total rated lifting load for jib (支腿全伸7.3m, 配重4t)**

支腿全伸7.3m, 不支第五支腿, 吊臂位于起重机侧方或后方;  
支第五支腿, 360°全回转  
Full-extend outrigger, without the 5th outrigger, boom at the side or the rear,  
or with the 5th outrigger, 360°swing

主臂仰角 Boom angle (°)	主臂 Boom 44.5m			起重量 Lifting load (kg)		
	副臂 Jib 8.5m			副臂 Jib 15m		
	0°	15°	30°	0°	15°	30°
78	4000	2700	2400	2500	1400	1100
75	3600	2500	2300	2100	1250	1040
72	3200	2300	2200	1800	1150	990
70	2900	2200	2100	1700	1100	950
65	2400	2000	1900	1400	950	880
60	1800	1700	1600	1200	850	800
55	1100	1100	1000	700	650	550
50	700	600	600	300	300	300

**QY70K-I副臂起重性能表 Total rated lifting load for jib (支腿半伸5m, 配重5t)**

支腿半伸5m, 不支第五支腿, 吊臂位于起重机侧方或后方;  
支第五支腿, 360°全回转  
Half-extend outrigger, without the 5th outrigger, boom at the side or the rear,  
or with the 5th outrigger, 360°swing

主臂仰角 Boom angle (°)	主臂 Boom 44.5m			起重量 Lifting load (kg)		
	副臂 Jib 8.5m			副臂 Jib 15m		
	0°	15°	30°	0°	15°	30°
78	4000	2700	2400	2500	1400	1100
75	3600	2500	2300	2100	1250	1040
72	2700	2300	2200	1800	1150	990
70	2100	1900	1800	1600	1100	950
65	1100	1000	1000	700	600	500
60	500	400	400	200		

- 表中额定起重量为最大允许值(包括吊钩重量和其它吊具的重量)。工作幅度是包括吊臂的变形量在内的实际值。风压为125N/m²达5级风时起重机仍可作业。
- 主臂起重量是主臂头部不装副臂情况下的计算值。当主臂头部装有副臂时, 主臂的额定起重量根据实际情况, 应减去副臂重量。
- 上述起重表仅供参考。详细信息请参照产品使用说明书。
- The total rated capacity in the table is the max. allowable value (including the weight of the hook block and slings); The working radius is the actual value, which includes the boom deflection; wind pressure is 125 N/m², lifting operation is still permissible under the condition of wind level 7.
- The total rated load is the max. lifting capacity for the boom head without jib, when jib is attached on boom head, the weight of jib should be reduced from the total rated load for boom.
- Take the above tables as reference only, see the product operation manual for details.

**QY70K-I主臂起重性能表 Total rated lifting load for boom (支腿半伸5m, 配重4t)**

支腿半伸5m, 不支第五支腿, 吊臂位于起重机侧方或后方;  
支第五支腿, 360°全回转  
Half-extend outrigger, without the 5th outrigger, boom at the side or the rear,  
or with the 5th outrigger, 360°swing

工作幅度 Working Radius (m)	基本臂 Base boom	中长臂 Mid-extend boom	中长臂 Mid-extend boom	中长臂 Mid-extend boom	中长臂 Mid-extend boom	中长臂 Mid-extend boom	全伸臂 Full-extend boom
3.0	70000						
3.5	63500						
4.0	54500	47500	40600				
5.0	31900	31700	31600	27600			
6.0	21400	21200	21100	22600			
7.0	15500	15300	15300	16600	17400		
8.0	11800	11600	11500	12700	13500	14000	
9.0	9200	9000	8900	10100	10800	11300	
10.0		7100	7000	8100	8800	9300	9600
12.0		4500	4400	5500	6100	6500	6900
14.0			2800	3700	4300	4700	5100
16.0			1500	2500	3100	3500	3800
18.0				1600	2200	2500	2800
20.0				900	1400	1800	2100
22.0					900	1200	1500
24.0						800	1100
26.0							700
倍率 Parts of line	12	9	8	6	4	3	3
主臂仰角 Boom angle	29.8°~71.5°	34.5°~73.1°	31.4°~77.2°	38.1°~79.4°	48.0°~79.6°	52.9°~80.0°	56.4°~79.5°

**QY70K-I副臂起重性能表 Total rated lifting load for jib (支腿半伸5m, 配重4t)**

支腿半伸5m, 不支第五支腿, 吊臂位于起重机侧方或后方;  
支第五支腿, 360°全回转  
Half-extend outrigger, without the 5th outrigger, boom at the side or the rear,  
or with the 5th outrigger, 360°swing

主臂仰角 Boom angle (°)	主臂 Boom 44.5m			起重量 Lifting load (kg)		
	副臂 Jib 8.5m			副臂 Jib 15m		
	0°	15°	30°	0°	15°	30°
78	4000	2700	2400	2500	1400	1100
75	3500	2500	2300	2100	1250	1040
72	2400	2200	2000	1800	1150	990
70	1900	1700	1600	1350	1100	900
65	900	900	800	550	500	400
60	350	320	300			

- 表中额定起重量为最大允许值(包括吊钩重量和其它吊具的重量)。工作幅度是包括吊臂的变形量在内的实际值。风压为125N/m²达5级风时起重机仍可作业。
- 主臂起重量是主臂头部不装副臂情况下的计算值。当主臂头部装有副臂时, 主臂的额定起重量根据实际情况, 应减去副臂重量。
- 上述起重表仅供参考。详细信息请参照产品使用说明书。
- The total rated capacity in the table is the max. allowable value (including the weight of the hook block and slings); The working radius is the actual value, which includes the boom deflection; wind pressure is 125 N/m², lifting operation is still permissible under the condition of wind level 7.
- The total rated load is the max. lifting capacity for the boom head without jib, when jib is attached on boom head, the weight of jib should be reduced from the total rated load for boom.
- Take the above tables as reference only, see the product operation manual for details.

**QY70K-I主臂起重性能表 Total rated lifting load for boom (支腿全伸7.3m, 配重5t)**

支腿全伸7.3m, 不支第五支腿, 吊臂位于起重机侧方或后方;  
支第五支腿, 360°全回转  
Full-extend outrigger, without the 5th outrigger, boom at the side or the rear,  
or with the 5th outrigger, 360°swing

工作幅度 Working Radius (m)	基本臂 Base boom	中长臂 Mid-extend boom	中长臂 Mid-extend boom	中长臂 Mid-extend boom	中长臂 Mid-extend boom	中长臂 Mid-extend boom	全伸臂 Full-extend boom
3.0	70000						
3.5	63500						
4.0	54500	47500	40600				
5.0	47000	42600	38500	27600			
6.0	38500	37000	34200	25500			
7.0	30000	29000	28800	23500	18200		
8.0	23500	23000	23000	21500	17500	14100	
9.0	18600	18500	18300	19000	16000	14100	
10.0		15000	15000	16000	14500	13200	9900
12.0		10300	10300	11300	12000	11200	9100
14.0			7300	8300	9000	9500	8100
16.0			5200	6300	6900	7300	7200
18.0				4700	5400	5800	5950
20.0				3600	4200	4600	4600
22.0				2700	3300	3700	3800
24.0					2600	3000	3100
26.0					2000	2400	2500
28.0						1900	2000
30.0						1400	1600
32.0						1100	1300
34.0							1000
36.0							700
倍率 Parts of line	12	9	8	6	4	3	3
主臂仰角 Boom angle	29.8°~71.5°	34.5°~73.1°	31.4°~77.2°	29.2°~79.4°	36.2°~79.6°	39.4°~80.0°	37.2°~79.5°

**QY70K-I副臂起重性能表 Total rated lifting load for jib (支腿全伸7.3m, 配重5t)**

支腿全伸7.3m, 不支第五支腿, 吊臂位于起重机侧方或后方;  
支第五支腿, 360°全回转  
Full-extend outrigger, without the 5th outrigger, boom at the side or the rear,  
or with the 5th outrigger, 360°swing

主臂仰角 Boom angle (°)	主臂 Boom 44.5m			起重量 Lifting load (kg)		
	副臂 Jib 8.5m			副臂 Jib 15m		
	0°	15°	30°	0°	15°	30°
78	4000	2700	2400	2500	1400	1100
75	3600	2500	2300	2100	1250	1040
72	3200	2300	2200	1800	1150	990
70	2900	2200	2100	1700	1100	950
65	2400	2000	1900	1400	950	880
60	2000	1800	1700	1200	850	830
55	1300	1200	1100	800	700	600
50	800	650	600	500	400	350