

www.truckcrane.com.cn

QY60K汽车起重机

QY60K TRUCK CRANE

本印刷品所包含的图片及数据，会随着产品的不断升级而改变，请以实际产品为准。
Pictures and data in this catalog change with the upgrade and modification of products, so please according to real vehicle.

Nanjing Construction Machinery Co.,Ltd.

Address:1708 Room 6# Building 399 Zhongyang Road Gulou District 210037,Nanjing,
Jiangsu Province of China.

Tel:0086-25-83179757, 83179767, 83179167

Fax:0086-25-83179787

E-mail:sales@truckcrane.com.cn san.sen@truckcrane.com.cn

Service after-sold :

Tel:0086-25-83179717

E-mai:Service@truckcrane.com.cn

Http://www.truckcrane.com.cn



QY60K 汽车起重机 60K

TRUCK CRANE



QY60K
NEW



QY60K
宽头驾驶室
Full Drivers Cab

五节臂U形截面主臂
Single cylinder elevation, double winches
上车先导比例控制
Crane pilot proportional control



QY60K
宽头驾驶室
Full Drivers Cab

五节臂U形截面主臂
Single cylinder elevation, double winches
上车先导比例控制
Crane pilot proportional control



创新吊臂系统，采用嵌入式滑块，插入式臂头专利技术与国际先进的“U”形截面吊臂，吊重性能卓越，吊重工作安全可靠。
Innovated boom system with inserted sliders, plug-in boom head of patented technology and world advanced shaped boom cross section makes excellent lifting capacity, safe and reliable lifting operations.



专有伸缩技术，避免因误操作引起的芯管弯曲、油缸弯曲、臂架折断情况的出现，提高操作安全性。
Exclusive telescoping technology prevents occurrence of core pipe bending, oil cylinder bending and boom breaking caused by mis-operation, and therefore operation safety is improved.



力矩限制器采用彩色液晶显示器，实现故障诊断智能化，精度领先于同行业。
Load moment limiter with color LCD realizes intelligent trouble diagnostic, and its precision leads in the same-class products in the industry.



人性化设计的驾驶室与操纵室，空间更大，操作灵活简便。
Ergonomic design cabs for driver and operator are spacious enough for flexible and convenient operations.



六大专有工艺制造技术，确保高品质产出。
Six specialized processing techniques ensure high quality production.



工况拓展两倍，新增5吨配重。
Working area is extended two times by 5t counterweight newly added.

负载敏感系统示意图 Loading sensitive system diagram

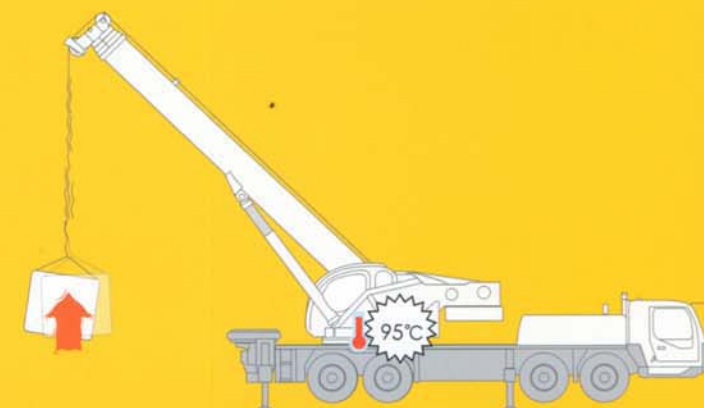
八项专利技术，保证起升、回转、变幅机构动作的平顺性、高效性与节能性。

Eight patented technologies ensure the smooth movement, high efficiency & economy of lifting, slewing and elevating mechanisms.

正常液压油温度，保证系统良好的运转，并延长产品生命周期
Normal hydraulic oil temperature, stable operation, long service life

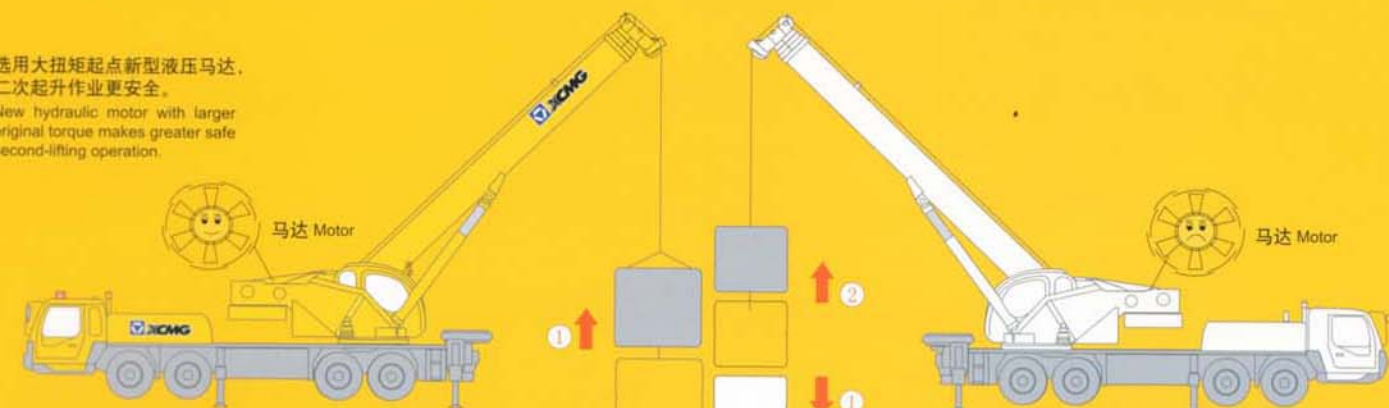


传统操纵系统示意图 Traditional operating system diagram



大排量马达保证一次性实现二次提升
Large displacement motor ensures to realize second lifting for one time

选用大扭矩起点新型液压马达，二次起升作业更安全。
New hydraulic motor with larger original torque makes greater safe second-lifting operation.



小排量马达容易产生二次起升下滑
Small displacement motor may result in sliding down in second lifting, existing hidden troubles

尺寸参数 Dimensions		Unit	
整体全长 Overall length		mm	13500
整机全宽 Overall width		mm	2800
整机全高 Overall height		mm	3510
重量参数 Weight			
行驶状态整机质量 Dead weight in travel state		kg	41000
前轴轴荷 Front axle load		kg	15000
后轴轴荷 Rear axle load		kg	26000
动力参数 Power			
发动机型号 Engine model			WD615.338(国III)
发动机额定功率 Engine rated output		kW/(r/min)	276/2200
发动机额定扭矩 Engine rated torque		N.m/(r/min)	1500/1400
行驶参数 Travel			
最高行驶速度 Max.travel speed		km/h	75
最小转弯直径 Min.turning diameter		m	24
最小离地间隙 Min.ground clearance		mm	291
接近角 Approach angle		°	17.5
离去角 Departure angle		°	12
最大爬坡能力 Max.gradeability		%	40
百公里油耗 Fuel consumption of per 100km		L	45
主要性能参数 Lifting performance			
最大额定总起重量 Max.total rated lifting load		t	60
最小额定幅度 Min.rated working radius		m	3
转台尾部回转半径 Turning radius at swing table tail		m	3.55
最大起重力矩 Max.load moment		kN.m	2060
基本臂 Base boom		m	11.2
最长主臂 Fully-extended boom		m	42
最长主臂+副臂 Full-extended boom+Jib		m	58
支腿纵向距离 Outrigger longitudinal distance span		m	5.81
支腿横向距离 Outrigger lateral distance span		m	6.7
工作速度参数 Working speed			
起重臂变幅时间 Boom elevating time		s	60
起重臂全伸时间 Boom telescoping time		s	≤150
最大回转速度 Max.slewing speed		r/min	≥2.0
主起升机构最大速度(单绳)(空载) Winch mechanism speed(single rope)(NO load)		m/min	≥130
副起升机构最大速度(单绳)(空载) Auxiliary mechanism speed(single rope)(NO load)		m/min	≥108

起重性能表 TOTAL RATED LIFTING LOAD

QY60K主臂起重性能表 Total rated lifting load for boom

全伸水平支腿，不支第五支腿，侧方，后方作业。
全伸水平支腿，支好第五支腿，360°全回转作业。
Full-extend outrigger, without the 5th outrigger, boom at the side or the rear,
or with the 5th outrigger, 360° swing

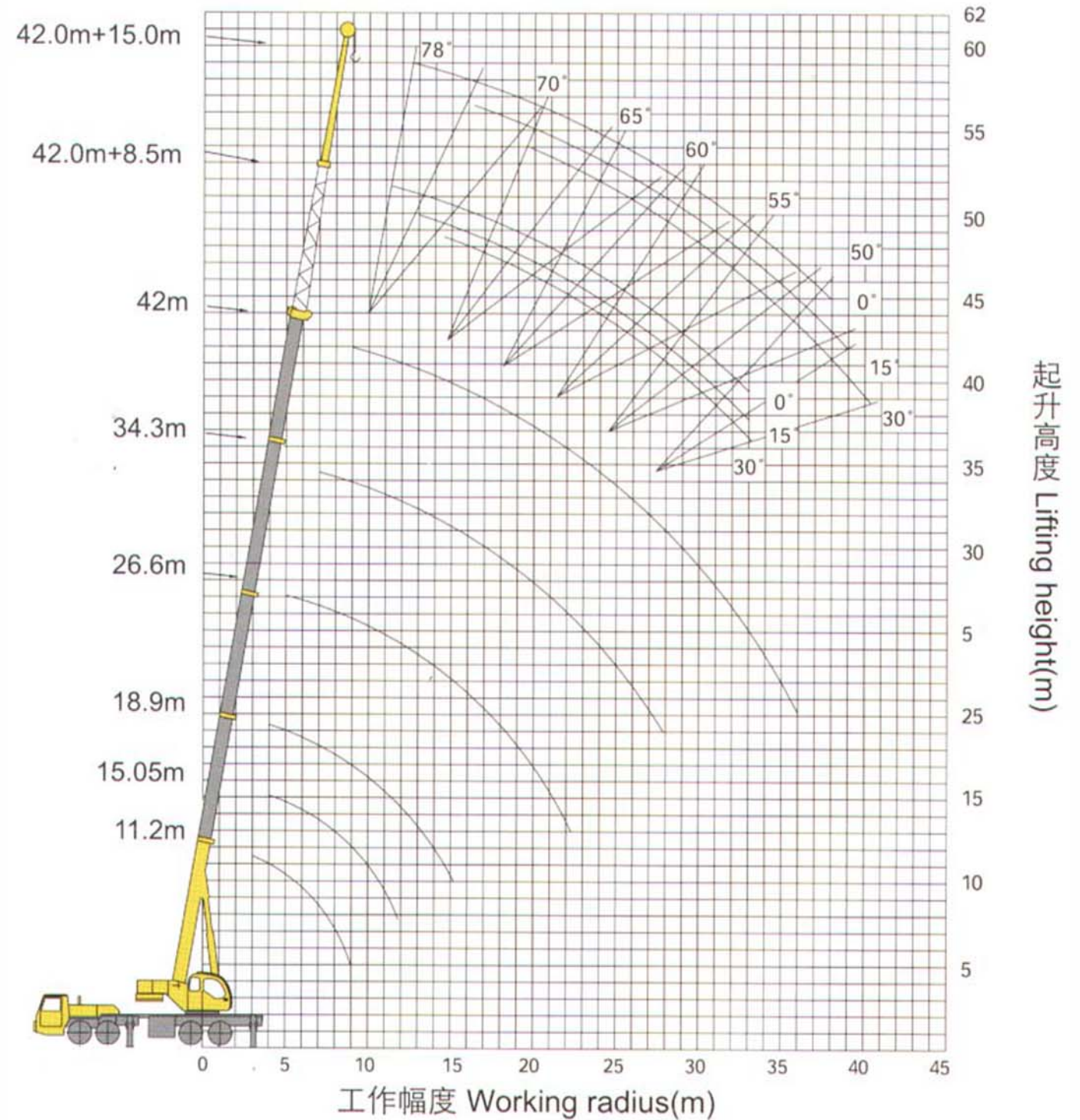
工作幅度 Working Radius (m)	臂长 Boom length 11.2m	臂长 Boom length 15.05m	臂长 Boom length 18.9m	臂长 Boom length 26.6m	臂长 Boom length 34.3m	臂长 Boom length 42m
3.0	60000					
3.5	54000					
4.0	48000	40000	32000			
4.5	43800	36500	30000			
5.0	41000	34000	28000	21800		
5.5	38200	31500	26000	20500		
6.0	35000	30000	24800	20000		
6.5	28500	27500	22500	18800		
7.0	25500	25200	21000	17800	14000	
8.0	19200	18800	18500	15800	12500	
9.0	15500	15100	14500	14300	11500	8500
10.0		11800	12000	12800	10600	8000
12.0		7800	8050	9400	9000	6900
14.0			5500	6900	7500	6000
16.0			3800	5200	5800	5200
18.0				3900	4300	4600
20.0				2800	3400	3600
22.0				2100	2600	3000
24.0					2000	2400
26.0					1500	1800
28.0					1100	1400
30.0					800	1100
32.0						700
34.0						500
倍率 Parts of line	12	8	7	4	3	2
各节臂 伸缩率 Tele%	0	50%	100%	100%	100%	100%
二	0	0	0	33%	66%	100%
三	0	0	0	33%	66%	100%
四	0	0	0	33%	66%	100%
五	0	0	0	33%	66%	100%
主臂仰角 Boom angle	23°~69.4°	28.3°~71°	24°~75°	29.1°~77.2°	24.1°~78.2°	23.2°~78.5°

QY60K副臂起重性能表 Total rated lifting load for jib

全伸水平支腿，不支第五支腿，侧方，后方作业。
全伸水平支腿，支好第五支腿，360°全回转作业。
Full-extend outrigger, without the 5th outrigger, boom at the side or the rear,
or with the 5th outrigger, 360° swing

主臂仰角 Boom angle (°)	主臂Boom 42m+副臂Jib 8.5m						主臂Boom 42m+副臂Jib 15m					
	副臂安装角 Jib offset 0°		副臂安装角 Jib offset 15°		副臂安装角 Jib offset 30°		副臂安装角 Jib offset 0°		副臂安装角 Jib offset 15°		副臂安装角 Jib offset 30°	
	起重量 Lifting load (kg)	起升高度 Lifting height (m)	起重量 Lifting load (kg)	起升高度 Lifting height (m)	起重量 Lifting load (kg)	起升高度 Lifting height (m)	起重量 Lifting load (kg)	起升高度 Lifting height (m)	起重量 Lifting load (kg)	起升高度 Lifting height (m)	起重量 Lifting load (kg)	起升高度 Lifting height (m)
78°	4000	51.8	2700	50.9	2400	49.5	2500	57.9	1400	56.2	1100	53.7
75°	3600	51.0	2500	50.0	2300	48.5	2100	57.0	1250	55.2	1040	52.5
72°	3200	50.1	2300	49.0	2200	47.4	1800	56.0	1150	54.0	990	51.1
70°	2900	49.4	2200	48.2	2100	46.6	1700	55.2	1100	53.1	950	50.1
65°	2200	47.5	2000	46.2	1900	44.4	1400	53.0	900	50.6	750	47.4
60°	1650	45.2	1600	43.8	1500	41.9	1000	50.4	700	47.8	680	44.4
55°	1050	42.7	1000	41.1	900	39.1	650	47.5	500	44.6	450	41.1
50°	550	39.8	500	38.1	450	36.0						

吊钩重量 Weight of hook block 100kg



▲ 起升高度曲线 Crane Lifting Height Curves