

QY16D 全液压汽车起重机主要特点

- ◆ QY16D汽车起重机采用自制的汽车起重机专用底盘，发动机采用上柴6C215-2发动机或杭发WD415.21发动机或上柴SC8DK230Q3（欧Ⅲ）。
- ◆ 国内首家采用四节六边形大圆角伸缩式吊臂，具有强大的起重性能。全伸主臂最大起升高度为30.7m，全伸主臂+副臂最大起升高度为38.5m，各项指标均为国内领先。
- ◆ 起升机构设有重力快放装置，有利于提高工作效率；制动器采用常闭外抱式制动器，工作安全可靠。
- ◆ 侧置副臂，单缸前支变幅，全液压驱动，双H支腿。
- ◆ 车架采用大箱型结构，抗扭能力强；支腿跨距大，极大地提高了起重作业性能。
- ◆ 精心设计的导向滑轮装置，避免了起重机的乱绳现象。
- ◆ 回转机构采用摆线针轮式减速机，可显著地吸收冲击，工作平稳。
- ◆ 驾驶室内采用豪华减震可调式座椅、可调式方向盘。
- ◆ 全新设计的操纵室，宽敞舒适，视野开阔。
- ◆ 气路系统加装干燥器，极大地提高了气路系统的可靠性。
- ◆ 设有高度限位装置、幅度指示器等完善的安全装置，并设有照明装置，便于夜间操作。
- ◆ 该型起重机有可供高原地区用户选择的QY16D高原型，适用于在恶劣的高原环境下作业。

QY16D FULL HYDRAULIC TRUCK CRANE

- ◆ QY16D Truck Crane adopts self-made truck crane specific chassis,with two kinds of engine for option.Shanghai 6C215-2 or Hangzhou engine WD415.21 or SC8DK230Q3 (Euro III) .
- ◆ 4-section telescopic boom of all-round angle hexagonal cross-section has powerful lifting capacity.The main boom gives a maximum lifting height of 30.7m.The main boom plus jib offer a maximum lifting height of 38.5m.Every performance is in the lead in China.
- ◆ A gravity lowering device equipped in winch system facilitates improving working efficiency;constant closed external meshing brake makes operation safe and reliable.
- ◆ Side-mounted jib,single cylinders for front support elevating,fully hydraulic drive and double H-shaped outriggers.
- ◆ The frame with box structure and torsion resistance,and wide outrigger extension greatly improve load lifting capacity.
- ◆ Guide roller meticulously designed avoids rope-disorder.
- ◆ Swing system with cycloid cylindrical lantern gear reducer can absorb shock effectively,run smoothly.
- ◆ Driver cab is equipped with damping adjustable seat and adjustable steering wheel.Air conditioner is available.
- ◆ Newly designed operator cab is spacious,comfortable and wide vision.
- ◆ Air circuit with a dryer improves its reliability greatly.
- ◆ Well-equipped safety devices,such as hoist height limiter and working radius indicator.Illuminators facility operation at night.
- ◆ The vehicle,equipped with devices for using in plateau,suits many kinds of working environment.



Nanjing Construction Machinery Co.,Ltd.

Address: 1708 Room 6# Building 399 Zhongyang Road ,
Gulou District 210037, Nanjing, Jiangsu , China.

Tel: 0086-25-83179767/83179757

Fax: 0086-25-83179787

E-mail: sales@truckcrane.com.cn san.sen@truckcrane.com.cn

Service after-sold :

Tel: 0086-25-83179717

E-mai: Service@truckcrane.com.cn

Http://www.truckcrane.com.cn



3C强制性产品认证证书 职业安全健康管理体系认证证书 环境管理体系认证证书




国家一级企业证书 ISO9001质量管理体系认证证书 ISO10012计量体系认证证书


2008年3月版

QY16D

SYSTEMIC OPTIMIZATION & UPGRADE

最大起重能力
Max. Total Rated Lifting Load  16t

主臂最大起升高度
Full-extend Boom Lifting Height  30.7m

副臂最大起升高度
Full-extend Boom+Jib Lifting Height  38.5m

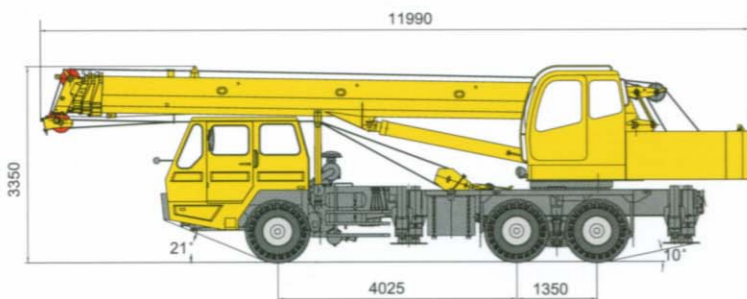


The Series of Construction Crane

- 全地面起重机 汽车起重机 履带式起重机
 All-Terrain Crane Series Truck Crane Series Crawler Crane Series

尺寸参数 Dimensions

整机全长 Overall length	11990mm
整机全宽 Overall width	2500mm
整机全高 Overall height	3350mm



▲ 整机外形尺寸 Outline dimensions

重量参数 Weight

行驶状态整机质量 Dead weight in travel state	24000kg
轴荷 Axle load	
前轴 Front axle	6400kg
后轴 Rear axle	17600kg

动力参数 Power

发动机型号 Engine model	SC8DK230Q3(欧III)
发动机额定功率 Engine rated output	170/2200kW/(r/min)
发动机额定扭矩 Engine rated torque	830/1400N.m/(r/min)
发动机额定转速 Max.travel speed	2200r/min

行驶参数 Travel

最高行驶速度 Max.travel speed	70km/h
最小转弯直径 Min.turning diameter	20000mm
最小离地间隙 Min.ground clearance	270mm
接近角 Approach angle	21°
离去角 Departure angle	10°
制动距离(车速为30km/h)Braking distance(at 30km/h)	9.5m
最大爬坡能力 Max.gradeability	26%
百公里油耗 Fuel consumption of 100km	~35L

主要性能参数 Lifting performance

最大额定总起重量 Max.total rated lifting load	16t
最小额定幅度 Min.rated working radius	3m
转台尾部回转半径 Turning radius at swing tadble tail	3.12m
最大起重力矩 Max.load moment	
基本臂 Base boom	686kN.m
最长主臂 Full-extend boom	388kN.m
最长主臂+副臂 Full-extend boom+Jib	254kN.m
支腿距离 Outrigger extension distance	
纵向/横向 Longitudinal/Lateral	4.6/5.4mm
起升高度 Lifting height	
基本臂 Base boom	9.9m
最长主臂 Full-extend boom	30.7m
最长主臂+副臂 Full-extend boom+Jib	38.5m

工作速度参数 Working speed

起重臂变幅时间 Boom elevating time	
起臂 Rising boom	60s
全伸 Full extending	95s
最大回转速度 Max.slewing speed	2.5r/min
支腿伸缩时间 Outrigger telescoping time	
水平支腿同时伸/缩 Outrigger beam extending/retracting synchronously	28/26s
垂直支腿同时伸/缩 Outrigger jack extending/retracting synchronously	32/30s
起升速度(单绳) Hoisting speed(single rope,2ndlayer)	
主起升机构满载/空载 Main winch with full load/no load	54/100m/min
副起升机构满载/空载 Auxiliary winch with full load/no load	54/100m/min

四节六边形伸缩式吊臂
4-section hexagonal telescopic boom

流线型整体式复合材料壳体的驾驶室、操纵室
streamlined and integrated driver's cab and operator's cab made of complex material



主臂起重性能表 Total rated lifting load for boom (表一 Table 1)

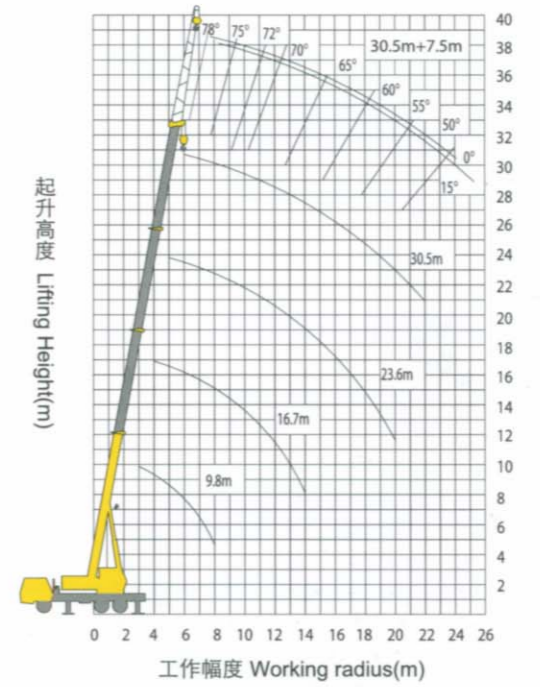
工作幅度 Working radius m	基本臂 Base boom 9.8m		中长臂 Mid-extend boom 16.7m		中长臂 Mid-extend boom 23.6m		全伸臂 Full-extend boom 30.5m	
	起重量 Lifting Load (kg)	起升高度 Lifting Height (m)	起重量 Lifting Load (kg)	起升高度 Lifting Height (m)	起重量 Lifting Load (kg)	起升高度 Lifting Height (m)	起重量 Lifting Load (kg)	起升高度 Lifting Height (m)
3.0	16000	9.9						
3.5	16000	9.6						
4.0	16000	9.4	12000	16.9				
4.5	14900	9.0	12000	16.7				
5.0	14000	8.6	11500	16.5	6500	23.8		
5.5	11800	8.2	10500	16.3	6500	23.6		
6.0	10100	7.7	9700	16.1	6500	23.5	3850	30.7
7.0	7800	6.5	8200	15.6	6000	23.2	3850	30.4
8.0	6200	4.6	6600	15.0	5800	22.8	3850	30.1
9.0			5400	14.3	5300	22.3	3500	29.8
10.0			4600	13.5	4700	21.8	3400	29.4
12.0			3100	11.3	3400	20.6	3300	28.5
14.0			2200	8.1	2580	19.1	2600	27.5
16.0					1900	17.3	2000	26.2
18.0					1500	14.8	1600	24.8
20.0					1100	11.6	1200	23.0
22.0							1000	20.9
最大主臂仰角 Max.Boom Angle	66°		74°		77°		79°	
最小主臂仰角 Min.Boom Angle	22°		26°		28°		42°	
吊钩重量 Weight of hook block	216kg							
钢丝绳倍率 Parts of line	6		5		3		1	

副臂起重性能表 Total rated lifting load for jib (表二 Table 2)

主臂仰角 Boom Angle	主臂 Boom30.5m+副臂 Jib7.5m			
	副臂补偿角 Jib offset 0°		副臂补偿角 Jib offset 15°	
	幅度 m	起重量 t	幅度 m	起重量 t
78°	7.9	2000	9.5	1850
75°	9.8	2000	11.4	1750
72°	11.7	1900	13.3	1600
70°	12.9	1800	14.5	1500
65°	16	1650	17.5	1400
60°	18.9	1300	20.3	1200
55°	21.7	800	22.9	700
50°	24.2	400	25.4	350
吊钩重量 Weight of hook block	48kg			
钢丝绳倍率 Parts of line	1			

- 注:
- ◆ 表中额定起重量的值,是在平整坚固的地面上本起重机能保证的最大起重量。
 - ◆ 表中额定重量包括吊钩和吊具的重量。
 - ◆ 表中的工作幅度是包括吊臂的变形量在内的实际值。
 - ◆ 主臂端部若装有副臂时,主钩起重量应将表中相应数值减少400kg。
 - ◆ 臂端单滑轮的起重性能用30.5m的主臂,但以2t为其上限。
 - ◆ 起重作业前,必须完全支好支腿。
 - ◆ 允许风力达6级以下的情况下作业。

- Notes:
- ◆ The value of rated load in the table.It is the largest load that the crane can work on the plat and hard ground.
 - ◆ The rated weight include the weight of the hook and the other equipment in the table.
 - ◆ The work scope in the table is an actual value which includes the formed value of the boom.
 - ◆ The load value of the hook should reduce 400kg when the top of the main boom is fixed up subsidiary boom.
 - ◆ The lift capability of the single pulley at the top of the boom is same to the 30.5m main boom,but its top limit is 2t.
 - ◆ You must set up the legs safely before you begin to work.
 - ◆ Permitting to work under the 6 grade wind.



▲ 起升高度曲线 Lifting Height Area

注: 公司保留随技术改进而修改技术参数及部件的权利
All specifications are subject to technical modifications without notice