

QY90K Truck Crane



QY90K Truck Crane Technical Specifications

1、 Travel state technical specifications

Item	Classificatory		Unit	Parameter
Dimension	Overall length		mm	14700
	Overall width		mm	2800
	Overall height		mm	3900
	Track	Axle1,2	mm	2950
		Axle2,3	mm	1800
		Axle3,4	mm	1420
		Axle4,5	mm	1505
Wheel space (single wheel/double wheel)		mm	2410/ 2107	
Weight	Dead weight in travel state		kg	53000
	Axle load	1st axle	kg	8700
		2nd axle	kg	8700
		3rd axle	kg	13400
		4th axle	kg	13400
		5th axle	kg	8800
Power	Crane superstructure engine	Rated power	kw/(r/min)	174 /2300
		Rated torque	N.m/(r/min)	854Nm/1400rpm
		Rated speed	r/min	2300
	Crane carrier	Rated power	kw	315

	engine	Rated torque	N.m	2100
		Rated speed	r/min	1900
Travel performance	Travel speed	Max. travel speed	km/h	80
		Min. stable travel speed	km/h	2
	Min. turning diameter		m	25
	Min. ground clearance		mm	280
	Approach angle		°	16
	Departure angle		°	14
	Braking distance (at 30km/h)		m	≤10
	Max. grade-ability		%	40
	Fuel consumption for 100km		l	97

2、 Working technical specifications

Item	Classificatory		Unit	Parameter		
Lifting performance	Max.total rated lifting capacity		t	90		
	Min.rated working radius		m	3		
	Swing radius at counterweight tail		mm	4510		
	Max. load moment	Base boom		kN.m	3234	
		Fully extended boom		kN.m	1578	
	Outrigger span	Longitudinal		m	7.1	
		Lateral		m	7.5 (5.6)	
	Boom height	Base boom		m	12.56	
		Fully extended boom		m	54	
		Fully extended boom + Jib		m	65.1	
	Boom length	Base boom		m	12.3	
		Fully extended boom		m	55	
Fully extended boom + Jib		m	55+15			
Working speed	Boo m elevating time	Boom raising		s	75	
		Boom telescoping time	Full extending		s	420
	Full retracting		s			
	Max. swing speed			r/min	2	
	Outrigger telescoping time	Outrigger beam	Synchronous extension		s	25
			Synchronous retraction		s	20
		Outrigger jack	Synchronous extension		s	40
			Synchronous retraction		s	25
	Hoist speed (single line at outermost layer)		Null load	m/min	126	
	Aux.winch (at outermost layer)		Null load	m/min	88	
Noise	Crane exterior noise		dB (A)	≤118		
	At seated position		dB (A)	≤90		

3、QY90K TRUCK CRANE LIFTING PERFORMANCE

Table 1 Total rated lifting load for boom (Ton, m)

17ton counterweight ,outrigger 360° swing																													
Working radius (m)	Boom length (m)																												
	12.3	16.23	16.23	20.16	20.16	20.16	24.1	24.09	24.09	28.01	28.01	28.01	31.94	31.94	31.94	35.87	35.87	35.87	39.8	39.8	39.8	43.73	43.73	43.73	47.66	47.66	51.58	55	
3	90	80	72.5																										
3.5	84	75	68.3	63.5	36.9	67.5																							
4	78	70	64.7	59.7	34.5	62.9	54	27.1	36.5																				
4.5	70	67	61.3	56.3	32.5	58.9	51	25.5	34.7																				
5	64	60	58.5	53.5	30.7	55.3	48	24.1	32.9	42	34.1	20.1	37.5	34.7	20.5														
6	55	52	45.7	48.3	27.5	49.1	43	21.7	29.9	38	31.1	18.1	34.1	31.9	18.7	30.1	24.1	18.3											
7	46	44	42.7	44.1	24.9	44.1	39	19.5	27.1	35	28.7	16.3	31.1	29.5	17.1	27.7	22.3	16.7											
8	40	37	37	40.7	22.7	39.9	36	17.9	24.9	32	26.5	14.9	28.7	27.5	15.7	25.7	20.7	15.5	23	16.5	15.3								
9	32.5	31	31	33.6	20.9	32.5	33	16.5	22.9	29	24.7	13.7	26.5	25.7	14.5	23.9	19.5	14.5	21	15.5	14.3	19	16.7	14.3					
10		26.5	26.5	28.1	19.3	27.1	28	15.3	21.3	27	22.9	12.7	24.5	24.1	13.5	22.3	18.3	13.5	20	14.5	13.5	18	15.7	13.5	15.3	13.5			
12		20.2	20.8	20.8	16.9	19.9	20	13.3	18.5	20	20.3	11.1	20.8	21.5	11.9	19.5	16.3	11.7	18	13.1	11.9	16	14.1	12.1	13.9	12.3	12.1		
14				16.1	14.9	15.2	16	11.7	16.5	16	17.5	9.7	16.1	17	10.5	16.7	14.7	10.5	16	11.7	10.7	14	12.7	10.9	12.5	11.1	11.1	10.1	
16				12.9	13.3	12	13	10.5	14.3	12	14.2	8.7	12.8	13.7	9.5	13.4	13.5	9.3	13	10.7	9.7	13	11.5	9.9	11.5	10.1	10.1	9.3	
18							10	9.3	11.9	9.9	11.7	7.7	10.5	11.3	8.5	11	11.8	8.5	11	9.7	8.7	11	10.5	8.9	10.5	9.3	9.3	8.7	8.7
20							8.3	8.5	10	8.1	9.9	7.1	8.6	9.5	7.7	9.2	9.9	7.7	9.1	8.9	8.1	9.3	9.5	8.3	9.5	8.5	8.7	7.9	
22										6.6	8.4	6.3	7.2	8	7.1	7.7	8.5	6.9	7.7	8.3	7.3	7.8	8.3	7.5	8.1	7.7	8.4	7.3	
24										5.4	7.2	5.9	5.9	6.8	6.5	6.5	7.2	6.5	6.5	7.5	6.7	6.6	7.1	6.9	6.9	7.3	7.2	6.7	
26													5	5.8	6.1	5.5	6.2	5.9	5.5	6.5	6.3	5.6	6.1	6.5	5.9	6.4	6.2	6.2	
28													4.1	4.9	5.7	4.7	5.4	5.5	4.6	5.6	5.9	4.8	5.3	5.9	5	5.6	5.3	5.3	
30																3.9	4.7	5.1	3.9	4.9	5.3	4.1	4.6	5.1	4.3	4.8	4.6	4.6	
32																			3.3	4.3	4.7	3.5	3.9	4.5	3.7	4.2	4	4	
34																			2.8	3.7	4.1	2.9	3.4	4	3.2	3.7	3.4	3.5	
36																						2.5	2.9	3.5	2.7	3.2	3	3	

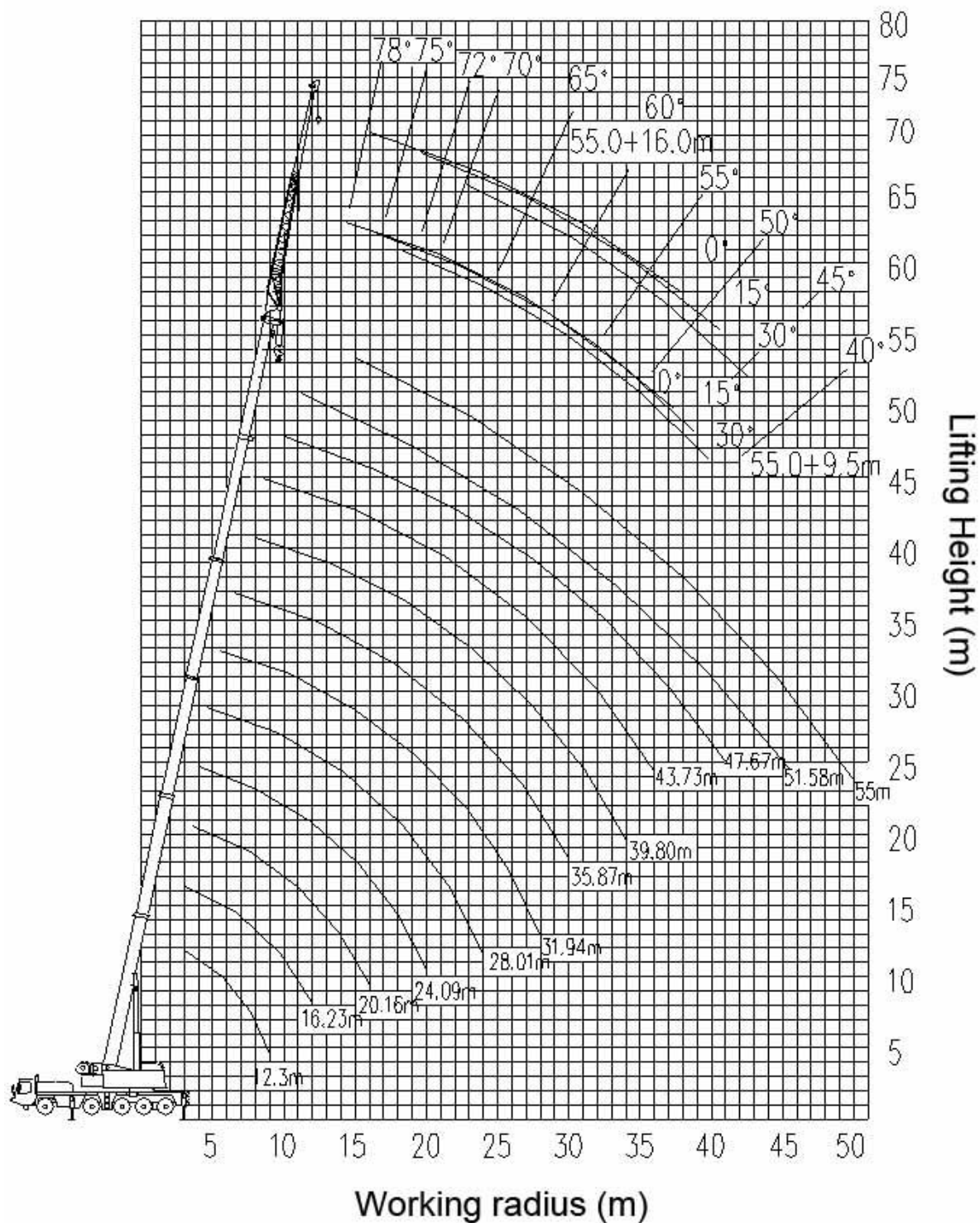
17ton counterweight ,outrigger 360° swing																													
Working radius (m)	Boom length (m)																												
	12.3	16.23	16.23	20.16	20.16	20.16	24.1	24.09	24.09	28.01	28.01	28.01	31.94	31.94	31.94	35.87	35.87	35.87	39.8	39.8	39.8	43.73	43.73	43.73	47.66	47.66	51.58	55	
38																						2.1	2.5	3.1	2.3	2.8	2.6	2.6	
40																										1.9	2.4	2.2	2.2
42																										1.6	2.1	1.9	1.9
44																												1.6	1.6
46																												1.3	1.3
48																													1.1
50																													0.9
Parts of line	13	12	11	9	6	10	8	4	6	6	5	3	6	5	3	4	4	3	4	3	3	3	3	2	3	2	2	2	
Telescopic method	0	0	0	0	0	1	1	0	0	2	0	0	2	1	0	2	1	0	2	1	0	2	1	0	2	1	2	3	
	0	1	0	1	0	1	1	0	0	1	1	0	1	1	0	1	1	0	2	1	1	2	2	2	2	2	2	3	
	0	0	1	1	0	0	1	0	1	1	1	0	1	1	1	1	1	2	1	1	2	2	2	2	2	2	2	3	
	0	0	0	0	1	0	0	1	1	0	1	2	1	1	2	1	1	2	1	2	2	1	2	2	2	2	2	3	
	0	0	0	0	1	0	0	2	1	0	1	2	0	1	2	1	2	2	1	2	2	1	1	2	1	2	2	3	

Table 2 Total rated lifting load for jib

17ton counterweight ,outrigger 360°swing												
Boom length =47.66m combined method 22221												
Boom angle (°)	9.5m						15m					
	Radius	Lifting load	Radius	Lifting load	Radius	Lifting load	Radius	Lifting load	Radius	Lifting load	Radius	Lifting load
78	12.94	7	14.99	3.6	16.79	2.6	14.59	3.2	18.2	2.2	21.37	1.5
75	15.81	5.9	17.83	3.3	19.55	2.5	17.79	3	21.3	2	24.36	1.4
72	18.64	5.1	20.6	3.1	22.26	2.3	20.94	2.8	24.4	1.8	27.29	1.4
70	20.48	4.5	22.42	2.9	24.02	2.2	22.99	2.5	26.4	1.7	29.19	1.3
65	24.98	4	26.82	2.6	28.29	2.1	28	2.2	31.2	1.6	33.79	1.3
60	29.28	3.2	31	2.5	32.33	2	32.79	1.9	35.8	1.5	38.11	1.2
55	33.33	2.5	34.94	2.2	36.11	1.9	37.31	1.8	40.1	1.4	42.12	1
50	37.12	2	38.59	2.1	39.59	1.8	41.53	1.6	44.1	1.4	45.8	1
Boom length =51.58m combined method 22222												
Boom angle (°)	9.5m						15m					
	Radius	Lifting load	Radius	Lifting load	Radius	Lifting load	Radius	Lifting load	Radius	Lifting load	Radius	Lifting load
78	14.17	7	16.22	3.6	18.01	2.6	15.85	3.2	19.5	2.2	22.61	1.5
75	17.24	5.9	19.25	3.3	20.97	2.5	19.24	3	22.8	2	25.8	1.4
72	20.25	5.1	22.21	3.1	23.86	2.3	22.58	2.8	26.1	1.8	28.91	1.4
70	22.23	4.5	24.15	2.9	25.75	2.2	24.26	2.5	28.2	1.7	30.94	1.3
65	27.03	4	28.86	2.6	30.32	2.1	30.07	2.2	33.3	1.6	35.83	1.3
60	31.61	3.2	33.33	2.5	34.65	2	35.14	1.9	38.2	1.5	40.44	1.2
55	35.93	2.5	37.53	2.2	38.69	1.9	39.93	1.8	42.7	1.4	44.72	1
50	39.96	2	41.43	1.9	42.43	1.8	44.39	1.5	46.9	1.4	48.64	1
Boom length =55m combined method 33333												
Boom angle (°)	9.5m						15m					
	Radius	Lifting load	Radius	Lifting load	Radius	Lifting load	Radius	Lifting load	Radius	Lifting load	Radius	Lifting load
78	15.27	6.5	17.32	3.6	19.11	2.6	16.79	3.2	20.6	2.2	23.72	1.5
75	18.51	5.7	20.51	3.3	22.23	2.5	20.53	3	24.1	2	27.07	1.4
72	21.68	5	23.64	3.1	25.29	2.3	24.03	2.8	27.5	1.8	30.35	1.4
70	23.77	4.5	25.69	2.9	27.29	2.2	26.32	2.5	29.7	1.7	32.49	1.3
65	28.83	3.7	30.66	2.6	32.12	2.1	31.9	2.2	35.1	1.6	37.64	1.3
60	33.66	3.1	35.38	2.5	36.69	2	37.21	1.9	40.2	1.5	42.49	1.2
55	38.22	2.2	39.81	2	40.97	1.9	42.23	1.7	45	1.4	27	1
50	42.47	1.7	43.92	1.6	44.92	1.5	46.91	1.2	49.5	1.1	51.14	1

4、Lifting height curvers

QY90K Truck Crane Lifting Curvers



Nanjing Construction Machinery Co.,Ltd.

[Http://www.truckcrane.com.cn](http://www.truckcrane.com.cn)

Address:1708 Room 6# Building 399 Zhongyang Road Gulou District 210037,Nanjing,
Jiangsu Province of China.

Tel:0086-25-83179757, 83179767, 83179167

Fax:0086-25-83179787

E-mail:sales@truckcrane.com.cn san.sn@truckcrane.com.cn

Chat on MSN:tractorchina@hotmail.com

Service after-sold :

Tel:0086-25-83179717

E-mai:Service@truckcrane.com.cn