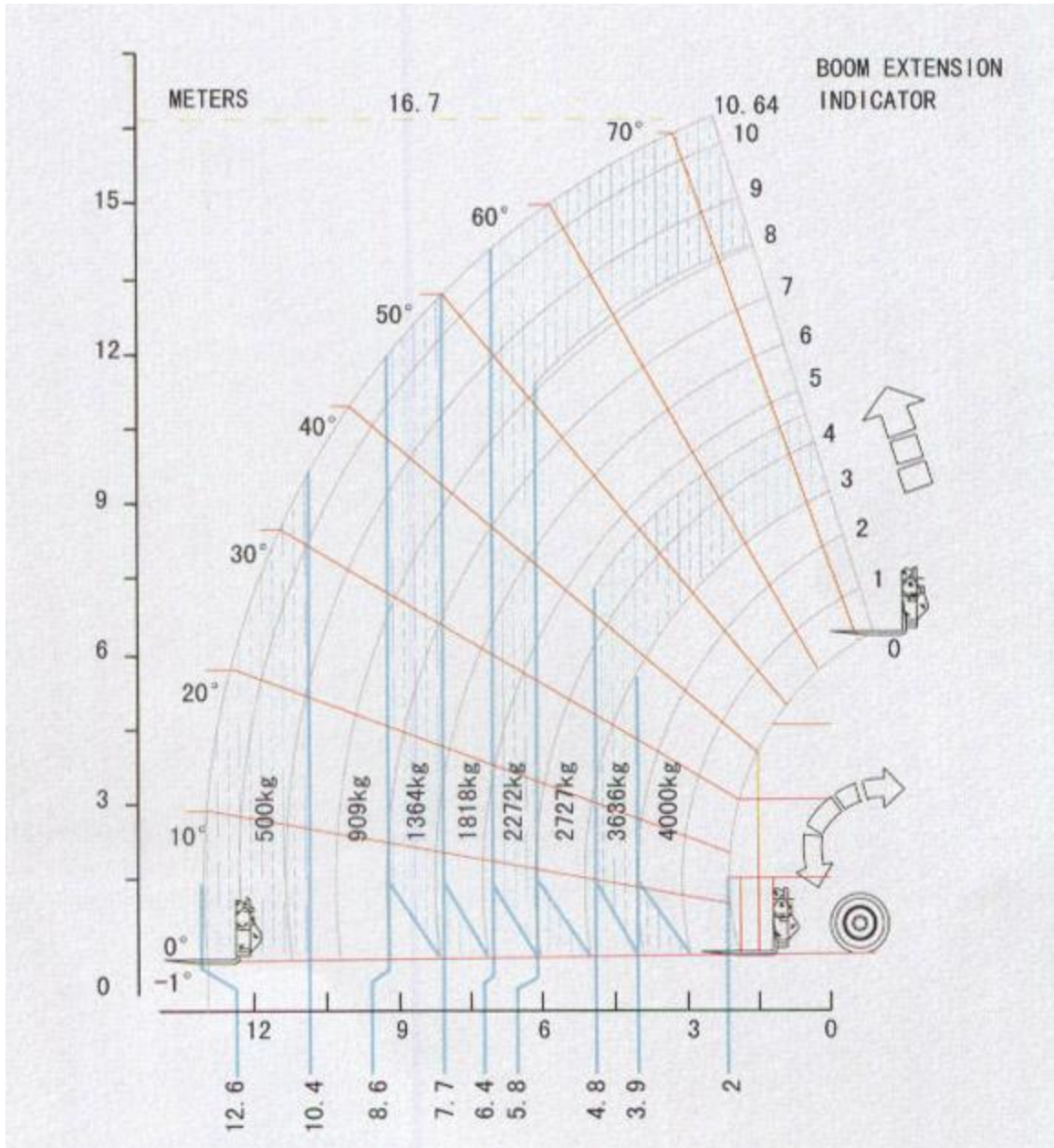


XT680-170 Telescopic-Boom Telehandler




◆ FEATURES

- ◇ **XT680-170 Telescopic-Boom Telehandler** is a kind of Multi-functional engineering machinery. It can be used for lift and carry, with good stability and efficiency. It has compact frame, flexible operation, sensitive lift, automatic adjustment, high carrying capacity.



◆ SPECIFICATIONS AND CHARACTERS

- ◇  1. Adopt the Cummins engine which is powerful and with low maintenance. Reach Europe III (EPA Tier3) exhaust standard, big torque force.

◇



2. Equipped with power transmission, compact structure, high rigidity.

◇



3. With articulated frame, small turning radius.

◇



4. Four wheel drive, steering by front wheel, Multiple steering options provide maximum flexibility to allow maneuvering in tight space and so on.



◇



5. The driver's cabin is furnished with the system of the air conditioner, It is safe and comfortable, and the visual field is broad. It adopts shock attenuation, which improved the comfortableness of the operating.

◇



6. Fully sealed wet multi-disc brakes in the wheel heads are protected from environmental influences.

◇



7. Multi-function instrument can be shosed: It is a kind of machinery which is suitable for lifting and carrying in narrow ground.

◆ XT680-170 Telescopic-Boom Telehandler

Description	Specification	Unit
Working weight	13600	kg
Overall Dimensions(LxWxH)	6680x2520x2690	mm
CUMMINS Model	QSB4.5	
Rated power	82	kW
Maximum lift capacity	4500	kg
Transmission	Italy CARRARO brand powershift	
Lift capacity to full height	2269	kg
Lift capacity at full reach	453	kg
Lift height	16700	mm
Reach at maximum lift height	2030	mm
Maximum forward reach	12600	mm





Please see the following Testing photoes:













Nanjing Construction Machinery Co.,Ltd.

**Address: 1708 Room 6# Building 399 Zhongyang Road Gulou District,Nanjing,
Jiangsu Province of China.**

Tel: 0086-25-83179757/83179767

Fax: 0086-25-83179787

**E-mail: sales@truckcrane.com.cn
san.sen@truckcrane.com.cn
service@truckcrane.com.cn**

Http: //www.truckcrane.com.cn