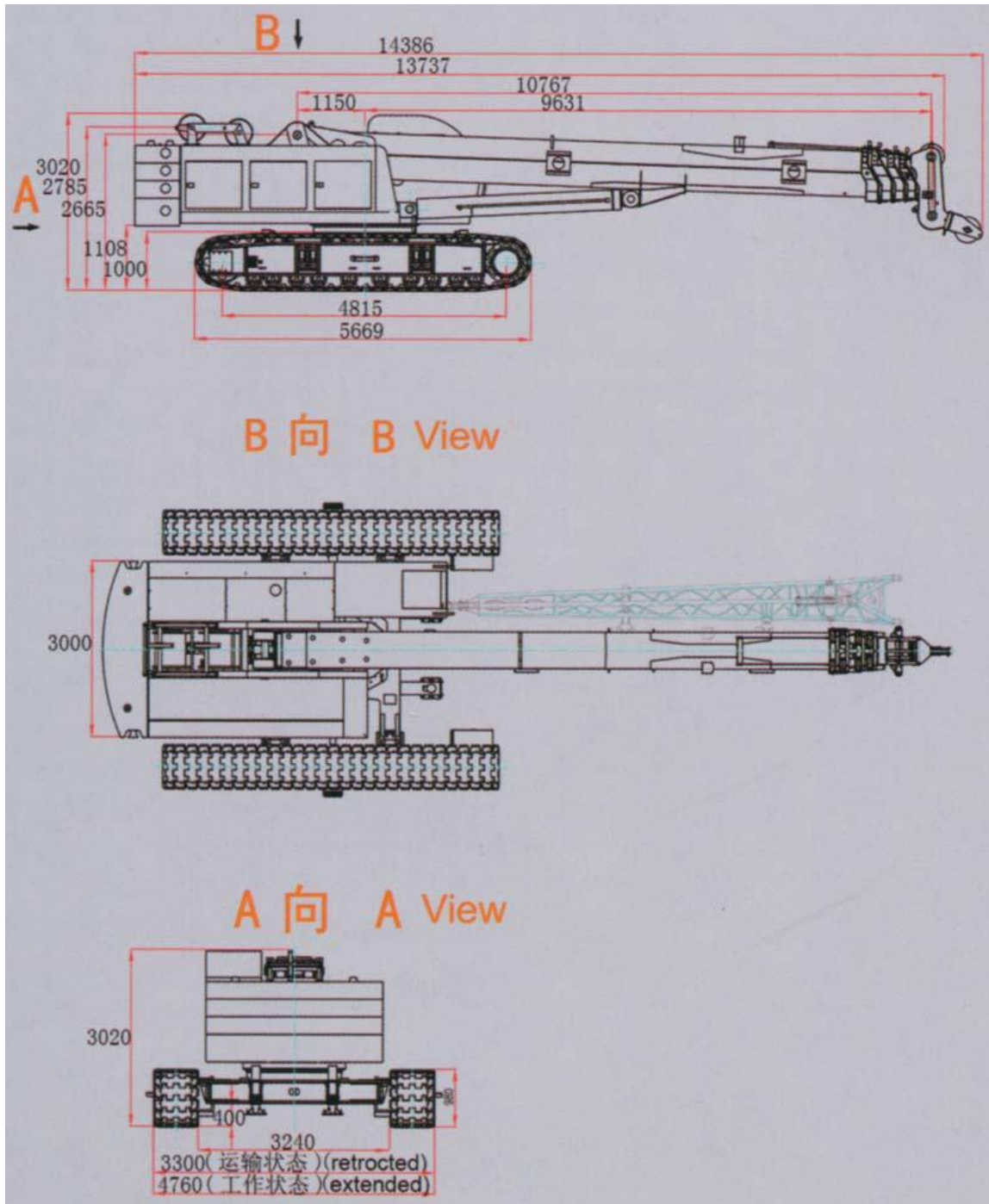


Telescopic-boom Crawler Crane SMQ500A





SMQ500A Crawler Crane

Function introduction of Telescopic-boom Crawler Crane

Telescopic Crawler Crane is a kind of new generation products, which is developed by our company and Dalian University of Technology. Now seven kinds of loading capacity are available, which are 25 tons, 40 tons, 50 tons, 65 tons, 80 tons and 100 tons. Our advanced and excellent-performanced Teleopic Crawler Crane fills the gap in domestic market, and will be an idea lifting equipment at present.

This machine combines the advantages of autocrane working without boom-disassembling and crawler crane working with load. The track chassis can be used in various working fields, with lower pressure to ground, more close to lifting load. The machine can pass through lower height for its flexible telescopic boom, usually as the replacement of autocrane and truss boom crawler crane with much large tonnages. It is mainly applied to such following fields, such as under-bridge, inner-tunnel and other height restrained off streets area or frequent shifting yard. This machine also has the track span of hydraulic telescopic crane, with the advantages of convenient transportation when retracting and stable performance when extending. Four outriggers are supported by hydraulic cylinder, while the distance between two crawler frames is adjusted by horizontal extending hydraulic cylinder.



Four outriggers are supported by hydraulic cylinder, while the distance between two crawler frames is adjusted by horizontal extending hydraulic cylinder

SMQ500A Crawler Crane Main Specifications

Item		Unit	Parameter	
Max.Lifting capacity		t	50	
Boom		m	10.8~38	
Jib		m	7.5	
Max.length of boom plus jib		m	38+7.5	
Boom angle		°	-2~78	
Working Speed	Rope Speed	Hoist	m/min	130
		Lower	m/min	130
	Swing speed	r/min	r/min	0~1.8
	Travel	km/h	km/h	0~2.4

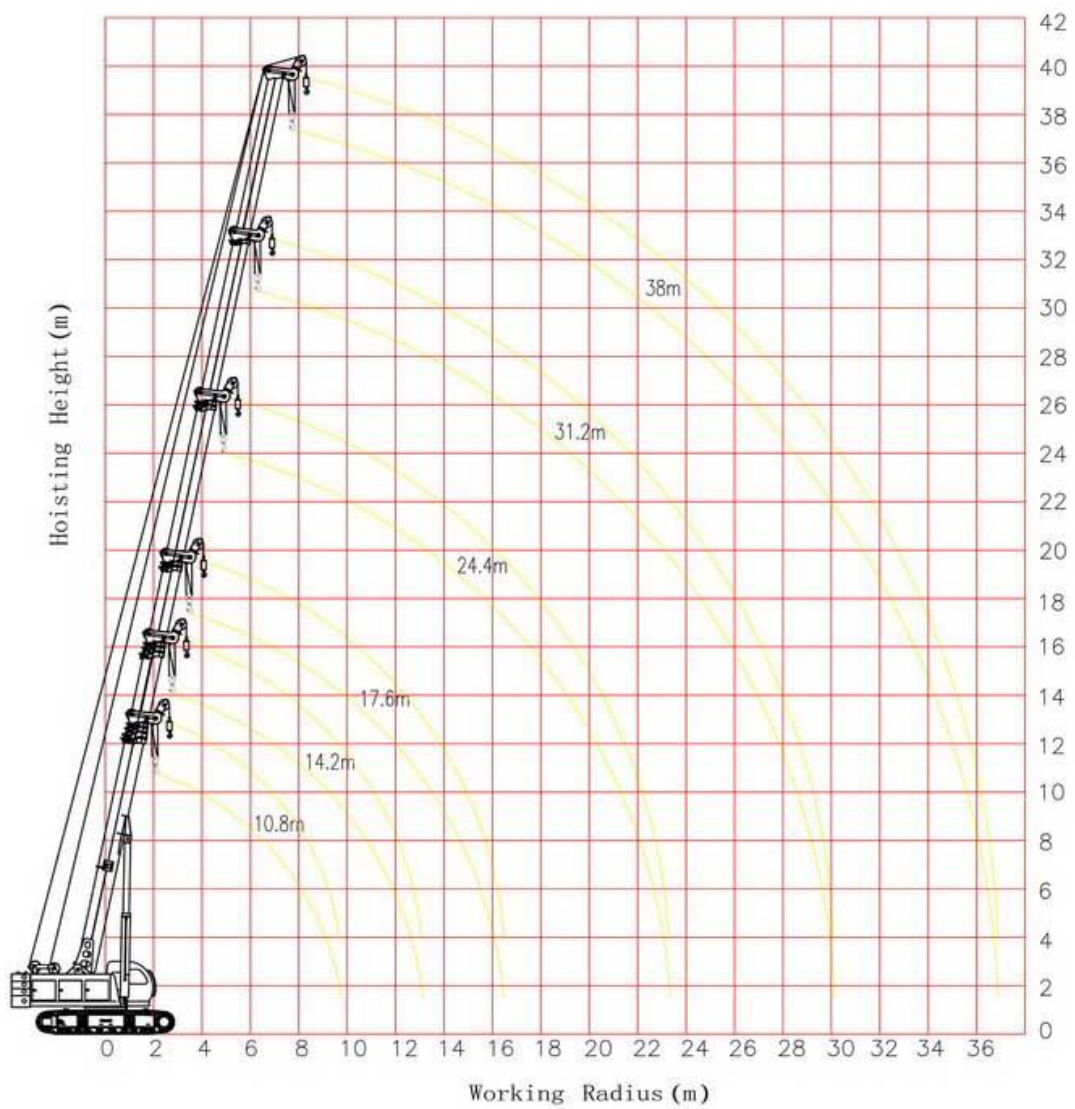
Max.multiplying	12	single rope (t)	5
Gradeability		%	40
Engine Model	WP6.210(Weichai-DEUTZ Power)		
Engine output/rotating speed		kw/rpm	155/2300
Weight of whole machine		t	57.8
Counterweight		t	18
Overall dimensions		mm	14386×4760×3020
Ground pressure		kg/cm ²	0.7

SMQ500A Boom Load Chart

Range (m)	Boom						Range (m)
	10.8	14.2	17.6	24.4	31.2	38	
3	50	31					3
3.5	46	31	28				3.5
4	41	31	28				4
4.5	38	31	25.5				4.5
5	33	28.6	24	19			5
5.5	29.3	26.8	23.5	19			5.5
6	26.2	24	22	19			6
6.5	23.5	21.7	20	18.6	14.2		6.5
7	21.1	19.7	18.3	17.3	14		7
8	17	16.5	15.4	14.8	12.6	8.5	8
9		14	13.1	12.8	12	8.2	9
10		11.8	11.2	11.1	10.6	8	10
11		10	9.8	9.8	9.5	7.8	11
12		8	8.5	8.7	8.5	7.6	12
13			7.2	7.7	7.5	7.1	13
14			6.3	6.9	6.8	6.3	14
15			5.2	6.2	6.2	5.9	15
16				5.2	5.5	5.4	16
17				4.8	5.1	4.8	17
18				4.4	4.5	4.5	18
19				3.9	4.1	4.1	19

20				3.2	3.8	3.7	20
22					3	3	22
24					2.6	2.5	24
26					2	2.1	26
28						1.6	28
30						1.3	30
Multiplying	12	10	8	6	4	4	

Working Range (Boom)



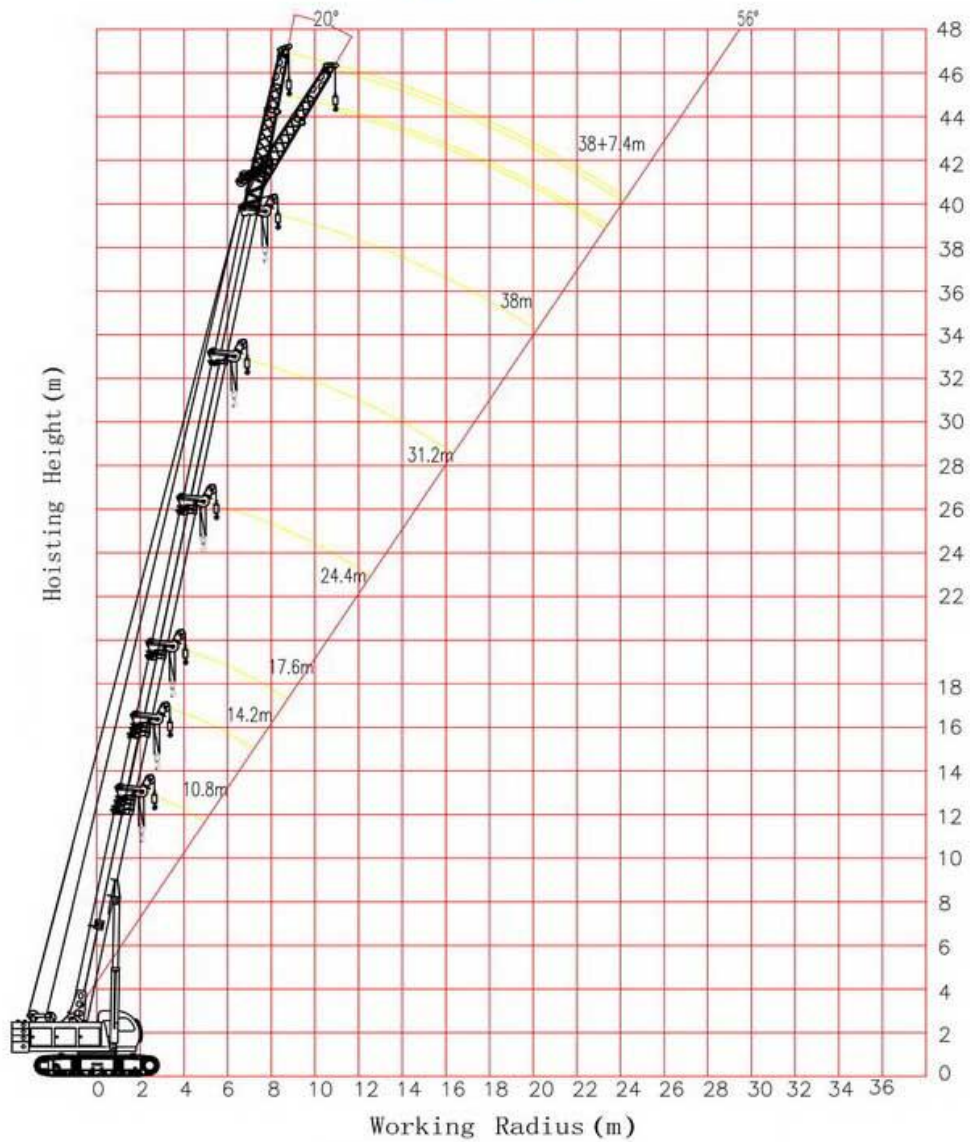
SMQ500A Jib Load Chart

	Jib		
Angle	0°	20°	Angle
78°	3.2	2.8	78°
76°	2.8	2.5	76°
74°	2.5	2.1	74°
72°	2.3	1.8	72°
70°	2.1	1.6	70°
68°	1.9	1.5	68°
66°	1.7	1.4	66°
64°	1.4	1.2	64°
62°	1.2	1	62°
60°	1	0.8	60°
Multiplying	N=1	N=1	

Note:

1. Loading capacity accouds with with GB3811-2008
2. Rated load in the chart is based on the circumstance that the crane works on the level and firm ground with the maximum permissible value under the ideal working conidtions
3. The unit in the chart is ton, and the value consists of hook and cargo sling. Weight of hook:50t hook-0.62,5t hook-0.051t
4. The counterweight is 18t
5. Max.boom hoist angle angle is 78°
6. Max.permissible wind speed for the operation of crane boom is 14/s
7. The minimum state rated value is over the side.

Working Range (Jib)



MAIN PARTS & SUB-SUPPLIER LIST OF SMQ500A TELESCOPIC CRAWLER CRANE

No	Item	Specification	Sub-Supplier
1	Engine	WP6.210	Weichai-DEUTZ Power
2	The radial piston pump	A7V117HD1LZFOO (2Units)	Beijing Huade Hydraulic Industry Co.,Ltd Nanjing Branch
3	Three coupling gear pump	GPC4-40-20/K1016-183L -00	Sichuan Changjiang Hydraulic Co.,Ltd

4	Lifting motor	A6V107HD1D2FZ2080 (2Units)	Beijing Huade Hydraulic Industry Co.,Ltd Nanjing Branch
5	Rotary motor	A2FE56/6.1WVZL10	Shanghai Hydraulic Pump Factory
6	Motion motor	A6VE107HZ1/63WVZL (2 只) 2 sets	Shanghai Hydraulic Pump Factory
7	Lifting reducer	QBL260J-00	Taian-Taishan Fushen Gearbox -Manufacturing Co.Ltd
8	Rotary reducer	HS160BL	Taian-Taishan Fushen Gearbox -Manufacturing Co.Ltd
9	Motion reducer	XBL800A-00	Taian-Taishan Fushen Gearbox -Manufacturing Co.Ltd
10	Rotary Supporter	1.6m Diameter	Ma' anshan Tongli
11	Hydraulic valve	WYZ10M-WX	Guizhou Fengyang Hydrualic Co.,Ltd
12			JIANGSU RENMIN MACHINES AND TOOLS CO.,LTD
13	Pilot valve	WYX serials	Guizhou Fengyang Hydrualic Co.,Ltd
14	Transmission Box & Coupling	Roegelberg KTR Imported from Germany	Roegelberg (Shanghai Pidi as agent)
15	Flex-Hydraulic Tank	300mm Diameter of Tank	Hefei Smarter Technology Co., Ltd
15	Supporting Hydraulic Tank		Hefei Smarter Technology Co., Ltd
16	Car Computer	CX-AV57B	Yichang Chuangxing Electric Technology and Development Co.,Ltd
17	Electromagnetic valve	FC500-1/13	ZANEDA Drive & Control Technology CO
18	Turn Table		Hefei Smarter Technology Co., Ltd
19	Lifting Arm	Five Sections	Hefei Smarter Technology Co., Ltd
20	Driving-House Air Conditioner	TY46G	Xuzhou Tian Technology Co.Ltd

21	Vehicle Frame Unit		Hefei Smarter Technology Co., Ltd
22	Steel Rope	20NAT6X29FI-IWR1770, 20*220m	Fasten Group Co.,
23	Driving House		Yangzhou Yuzhong

Note: All specifications on our web-site are subject to technical modifications without notice.

Nanjing Construction Machinery Co.,Ltd.

[Http://www.truckcrane.com.cn](http://www.truckcrane.com.cn)

Address:1708 Room 6# Building 399 Zhongyang Road Gulou District 210037,
Nanjing, Jiangsu Province of China.

Tel:0086-25-83179757, 83179767, 83179167

Fax:0086-25-83179787

E-mail:sales@truckcrane.com.cn san.sen@truckcrane.com.cn

Chat on MSN:tractorchina@hotmail.com

Service after-sold :

Tel:0086-25-83179717

E-mai:Service@truckcrane.com.cn